



Intel[®] Wireless Music

Setup Guide

For Windows* 7 32-/64-bit OS

September 2011

Revision 0.1

Intel Confidential



Notice: This document contains information on products in the design phase of development.

INFORMATION IN THIS DOCUMENT IS PROVIDED IN CONNECTION WITH INTEL PRODUCTS. NO LICENSE, EXPRESS OR IMPLIED, BY ESTOPPEL OR OTHERWISE, TO ANY INTELLECTUAL PROPERTY RIGHTS IS GRANTED BY THIS DOCUMENT. EXCEPT AS PROVIDED IN INTEL'S TERMS AND CONDITIONS OF SALE FOR SUCH PRODUCTS, INTEL ASSUMES NO LIABILITY WHATSOEVER AND INTEL DISCLAIMS ANY EXPRESS OR IMPLIED WARRANTY, RELATING TO SALE AND/OR USE OF INTEL PRODUCTS INCLUDING LIABILITY OR WARRANTIES RELATING TO FITNESS FOR A PARTICULAR PURPOSE, MERCHANTABILITY, OR INFRINGEMENT OF ANY PATENT, COPYRIGHT OR OTHER INTELLECTUAL PROPERTY RIGHT. UNLESS OTHERWISE AGREED IN WRITING BY INTEL, THE INTEL PRODUCTS ARE NOT DESIGNED NOR INTENDED FOR ANY APPLICATION IN WHICH THE FAILURE OF THE INTEL PRODUCT COULD CREATE A SITUATION WHERE PERSONAL INJURY OR DEATH MAY OCCUR.

Intel may make changes to specifications and product descriptions at any time, without notice. Designers must not rely on the absence or characteristics of any features or instructions marked "reserved" or "undefined." Intel reserves these for future definition and shall have no responsibility whatsoever for conflicts or incompatibilities arising from future changes to them. The information here is subject to change without notice. Do not finalize a design with this information.

Any software source code reprinted in this document is furnished under a software license and may only be used or copied in accordance with the terms of that license.

Intel processor numbers are not a measure of performance. Processor numbers differentiate features within each processor family, not across different processor families. See http://www.intel.com/products/processor_number for details.

The products described in this document may contain design defects or errors known as errata which may cause the product to deviate from published specifications. Current characterized errata are available on request.

Code Names are for use by Intel to identify products, platforms, programs, services, etc., development by Intel that have not been made commercially available to the public, i.e., launched or shipped. They are never to be used as "commercial" names for products or intended to function as trademarks.

Contact your local Intel sales office or your distributor to obtain the latest specifications and before placing your product order.

Copies of documents which have an order number and are referenced in this document, or other Intel literature, may be obtained by calling 1-800-548-4725, or by visiting [Intel's Web Site](#).

Intel, Intel Core, and the Intel Logo are trademarks of Intel Corporation in the U.S. and other countries.

*Other names and brands may be claimed as the property of others.

Copyright © 2011, Intel Corporation. All rights reserved.



Contents

1	Introduction	5
1.1	Intended Audience	5
1.2	Process Overview	5
1.3	Hardware Requirements	5
2	Installation	6
2.1	Install Intel® WiDi Software	6
2.2	Install Intel® Wireless Music Drivers.....	8
2.3	Connecting to an Intel® Wireless Music Speaker Adapter	10



Revision History

Document Number	Revision Number	Description	Date
N/A	0.1	Initial release of the document.	September 2011

§



1 Introduction

This document provides step-by-step instructions on how to install Intel® Wireless Music on a properly configured notebook.

1.1 Intended Audience

This guide is intended for experienced system integrators and other PC builders with integrating Intel Wireless Music into notebook computer systems. It is not intended for general audiences.

1.2 Process Overview

Intel Wireless Music requires certain prerequisites are met before installation.

Please verify the following before installing any software.

1. Ensure your targeted platform meets the specified hardware, operating system, and software requirements defined in the *Intel® Wireless Music for Notebooks 2.2 Readme*.
2. Ensure that the target system has the proper system drivers and software. Also outlined in the *Intel® Wireless Music for Notebooks 2.2 Readme*.

Note: All Intel software and drivers are available on Intel® Validation Internet Portal (<https://platformsw.intel.com>). Contact your Intel support representative to get access or for recommendations for Intel system driver versions to use for optimal performance.

1.3 Hardware Requirements

- Compatible notebook as outlined in the Intel® WiDi for Notebooks 2.2 Readme.
- Logitech Wireless Music Speaker Adapter, Model S-00112*
- Speaker set, receiver, or stereo system with available RCA or mini-audio jack input.

§

2 Installation

2.1 Install Intel® WiDi Software

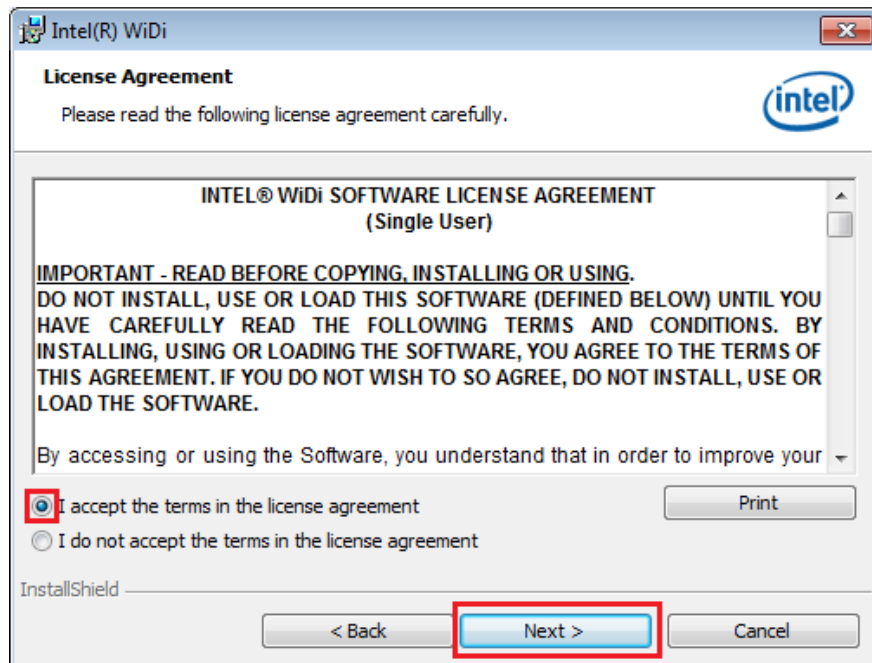
1. Unzip Intel® Wireless Display folder.
2. Open folder and navigate to the Intel Wireless Display for notebooks folder.
3. Launch setup.exe file.
4. Accept Windows User Access Control prompt.
5. At Intel Wireless Display Installer welcome page, select "Next >" when prompted.



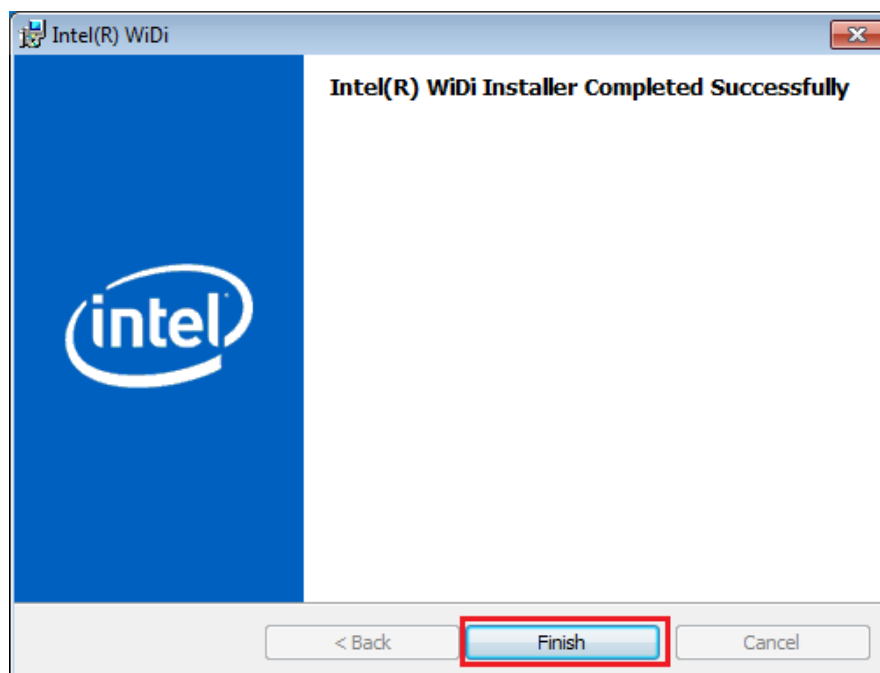


Installation

6. Accept EULA and select "Next >".



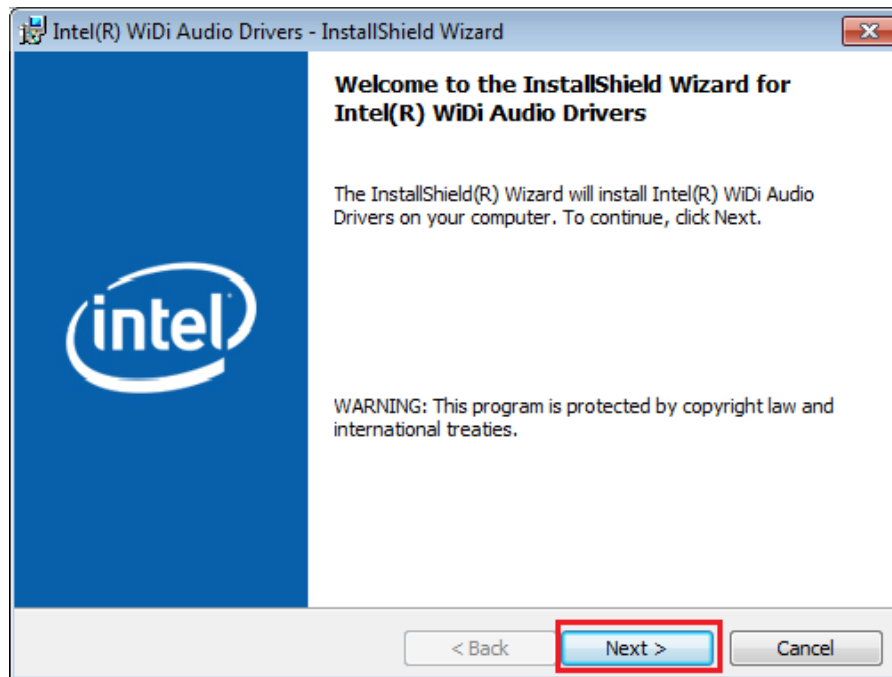
7. After successful installation, select "Finish".



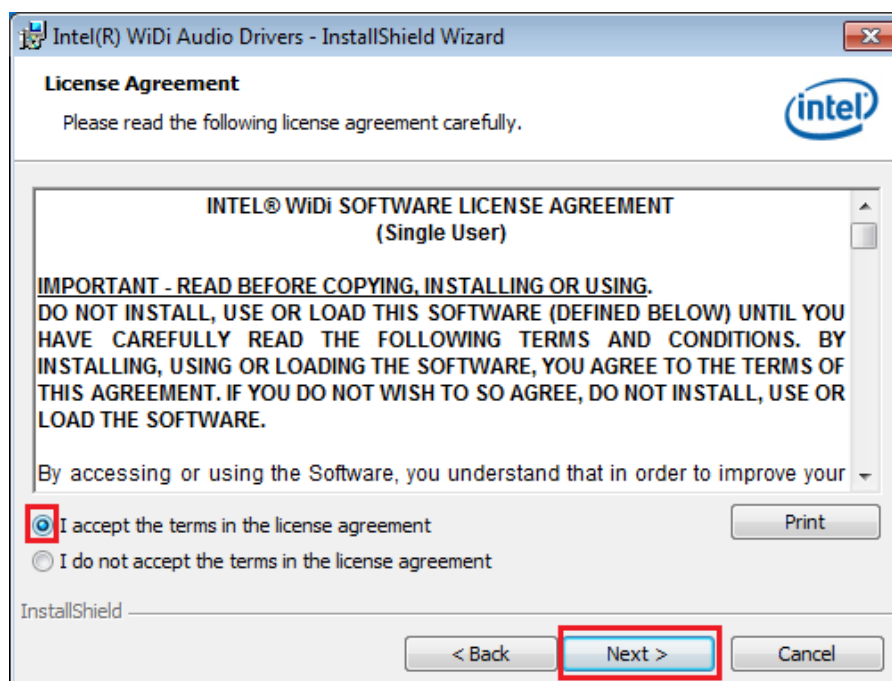


2.2 Install Intel® Wireless Music Drivers

1. Open Intel® Wireless Music Driver folder.
2. Launch autorun.exe file.
3. Accept Windows User Access Control prompt.
4. At Intel Wireless Music Drivers welcome page, select "Next >" when prompted.



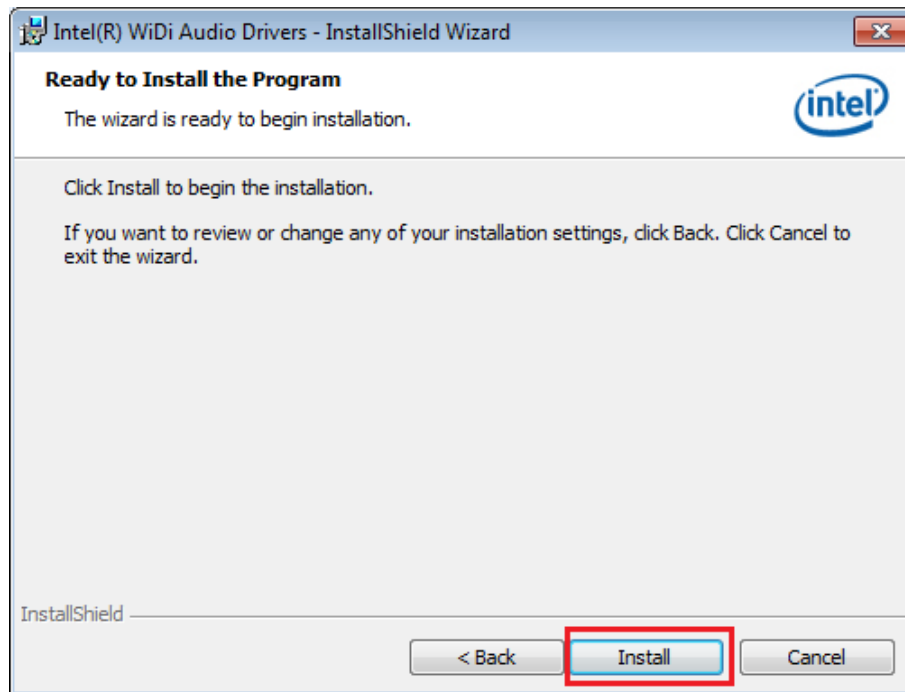
5. Accept EULA and select "Next >".



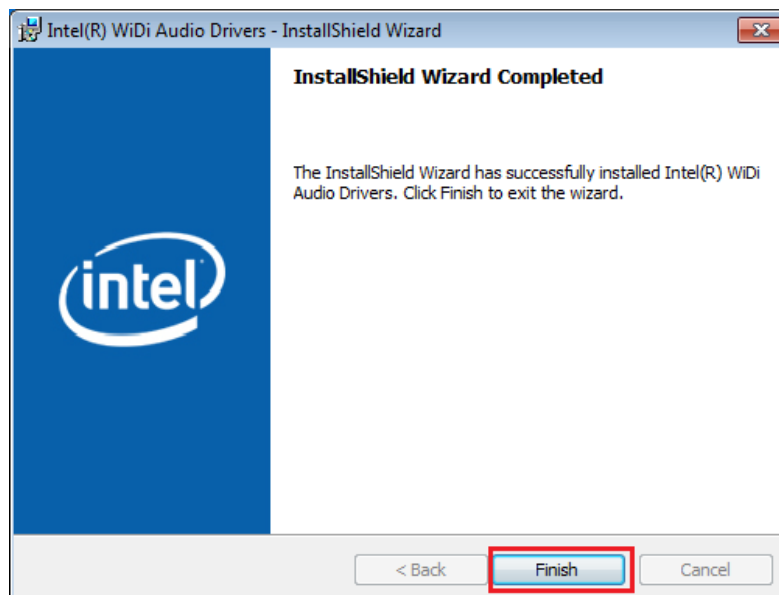


Installation

6. Select "Install" to begin installation.



7. After successful installation, select "Finish".





2.3 Connecting to an Intel® Wireless Music Speaker Adapter

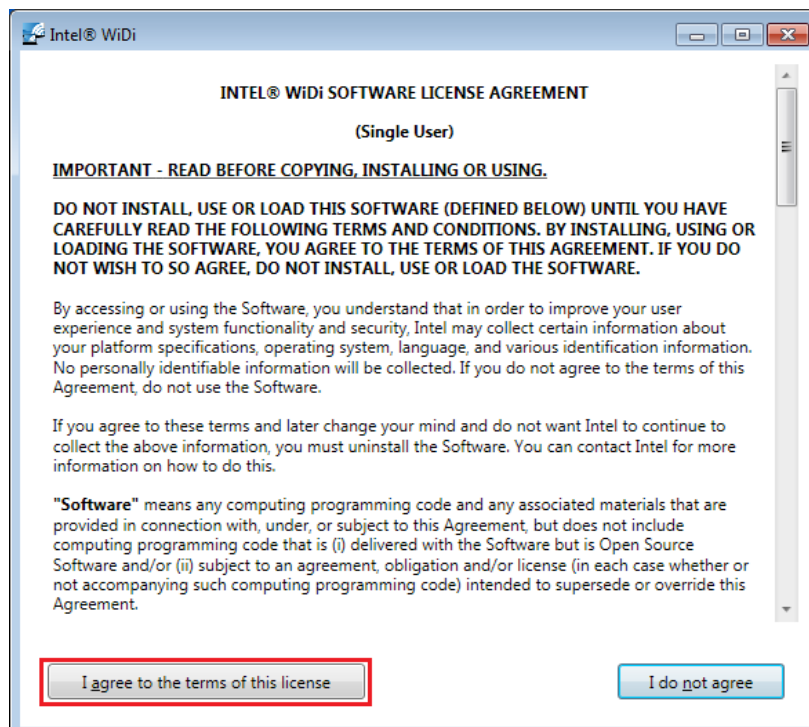
1. Connect power cable to Speaker Adapter.



2. Connect Speaker Adapter to speaker set, receiver, or stereo system through provided mini-audio jack to RCA cable adapter or mini-audio jack cable.

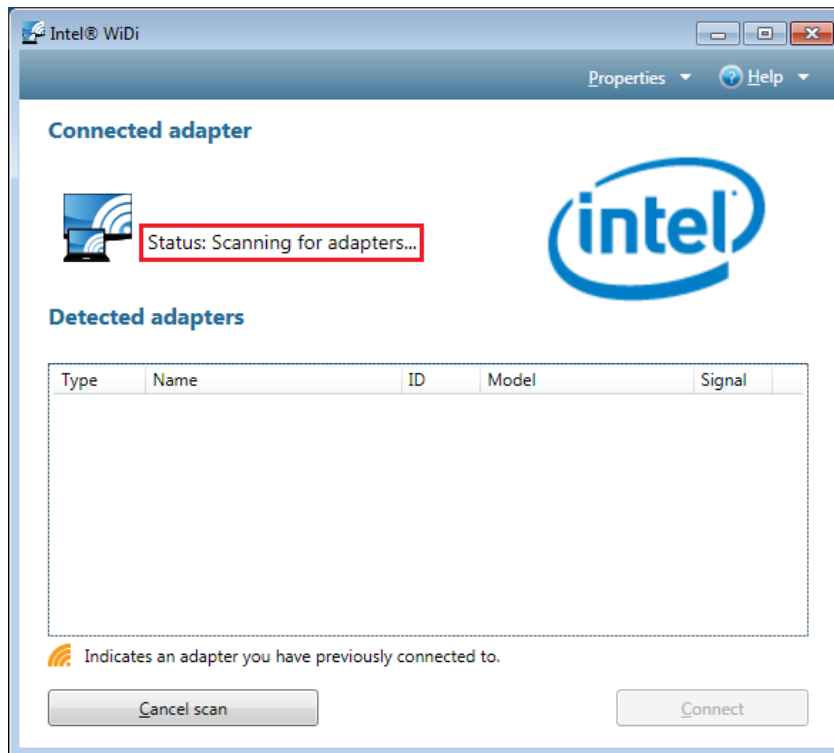


3. Launch Intel WiDi from Icon on desktop or from Start Menu.
4. Accept Intel WiDi Software License Agreement.

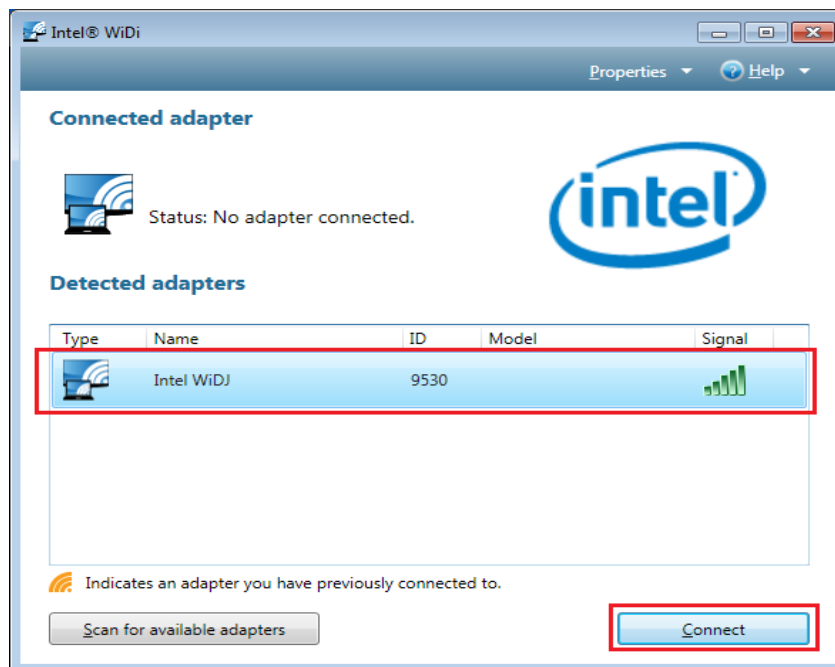


Installation

- Wait while Intel WiDi Software automatically scans for adapters after launch.



- Select Intel Wireless Music Adapter from detected adapters list and press "Connect".





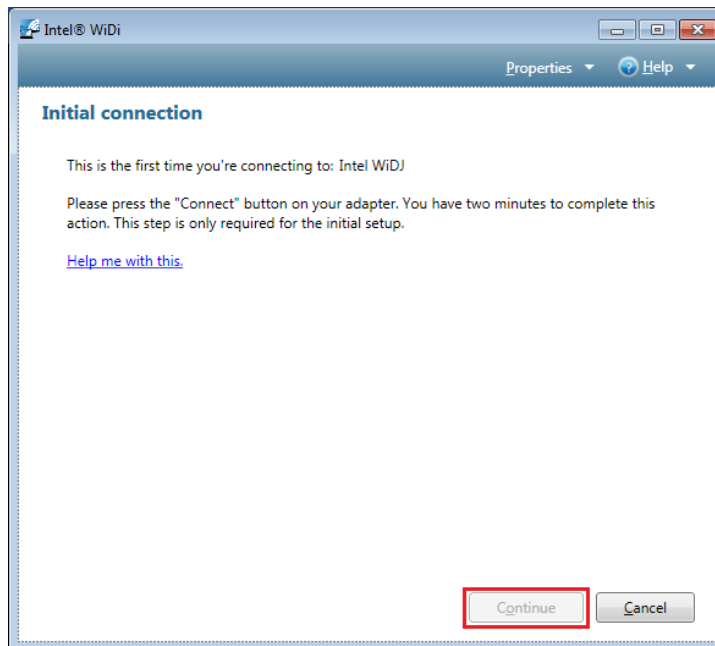
Installation

7. At the Initial Connection screen, press the connect button on the Speaker Adapter to pair the host with Speaker Adapter.



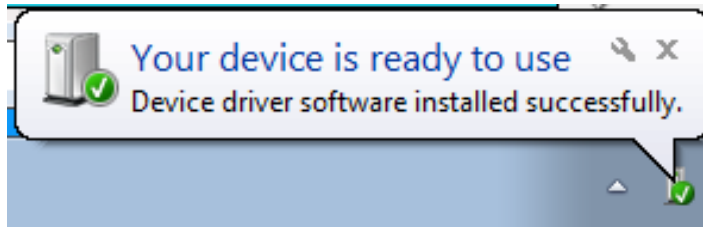
Note: This is a onetime occurrence per adapter. This step is only required during the initial connection process.

8. Once successfully paired, select "Continue".

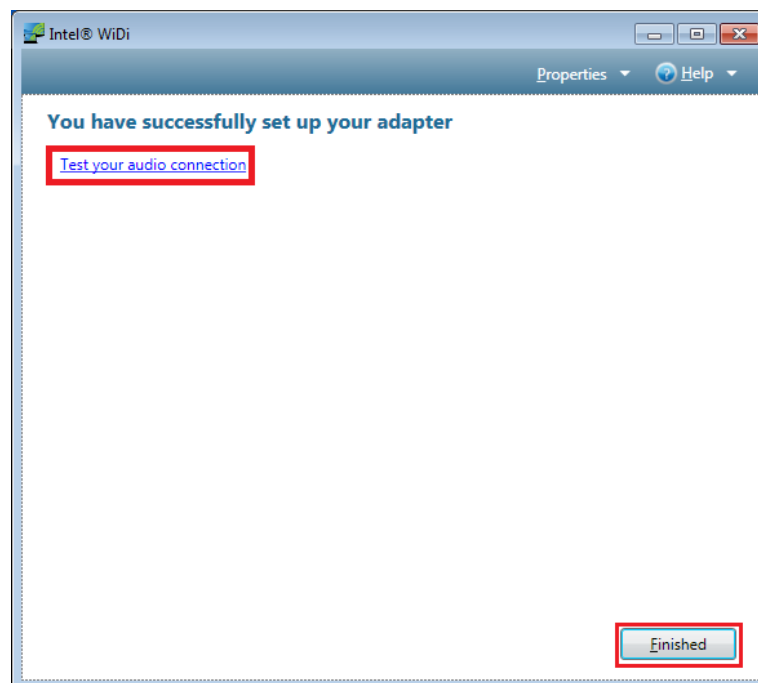


Installation

9. For initial setup, Intel Wireless Music Drivers will automatically install for the newly connected Speaker Adapter. Please wait for a Windows pop-up signaling that the audio device is ready for use.



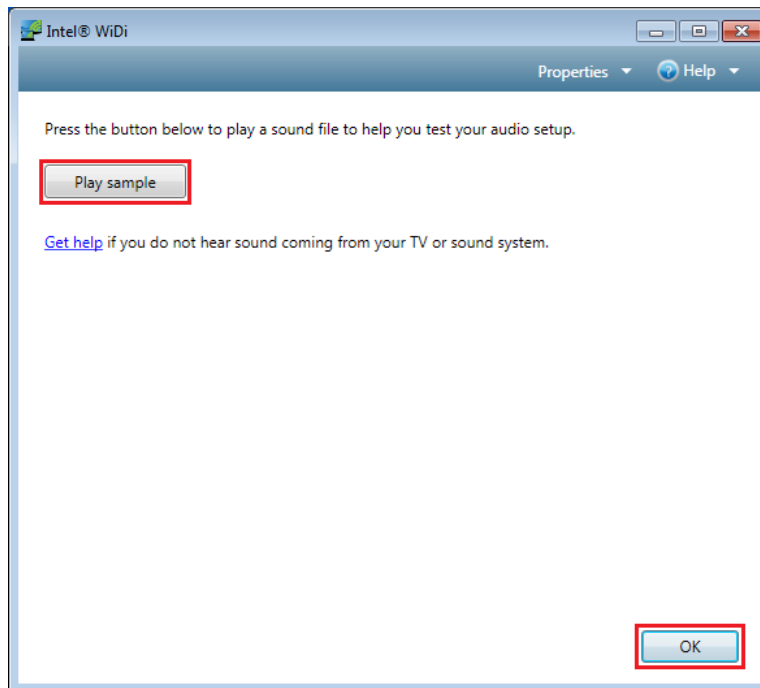
10. To verify a successful audio connection, select the "Test your audio connection" link or select "Finished" to bypass this test.



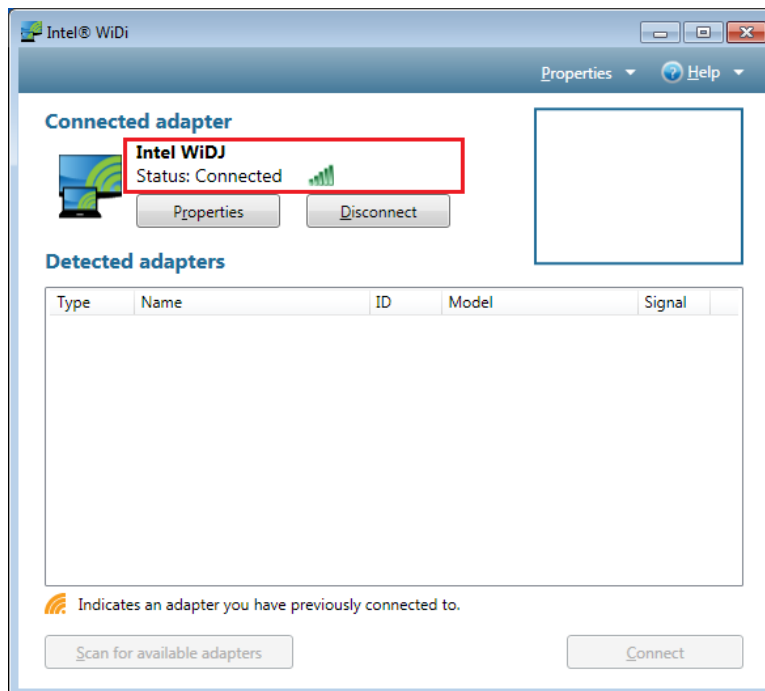


Installation

11. Select "Play Sample" to play sample audio from your connected speaker set.



12. Select "Ok" after audio testing is complete.
13. Verify that the Intel Wireless Music Speaker Adapter is in a connected state.





Installation