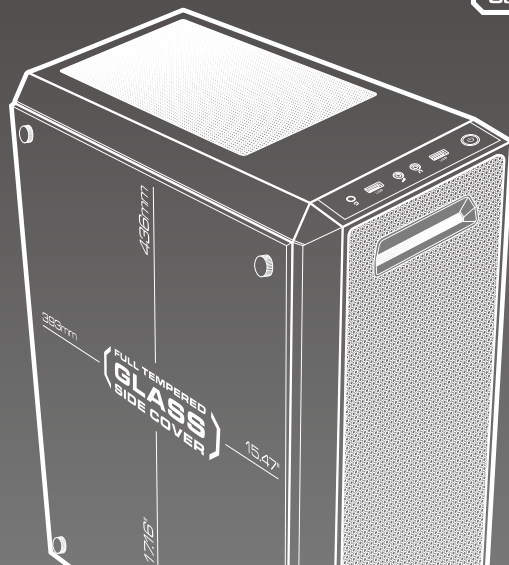




REAL GEAR FOR REAL GAMERS

COUGAR Gaming case



# MX350

**MESH** TEMPERED GLASS SIDE PANEL MID-TOWER

MX350 Mesh offers you a high-end design with a clear vision of your computer's internal components thanks to its massive tempered glass side panel. Add to this an impressive support for cooling and components and a front mesh panel that seamlessly allows air to go in, and you've got one of the best mid-towers ever.

### Features

**A WINDOW TO POWER**  
MX350 Mesh offers you great visibility of your PC's components: A generously sized tempered glass side window allows you to see your gaming beast in action, giving you room to create excellent lighting solutions and enjoy them!

**MASSIVE EXPANDABILITY**  
7 PCI slots and support for up to 350mm long graphics cards allow you to install all the horsepower you need to run. 4K/60fps games and even more. When you add up the capability of hosting up to two 2.5" SSDs and two 3.5" HDDs, what you get is a case that can run and store all the games you want.

**STRONG COOLING**  
Want to cool all those powerful components? No problem. You can install up to five fans and a 240mm water cooling radiator to protect your investment from the threat of overheating.

**MINIMALIST BEAUTY**  
The covers for the PSU and the 3.5" drive bay allow you to hide the cables behind them, improving the internal airflow and giving you an unobstructed view of your components. Easily detachable and cleanable dust filters behind the front, top and bottom covers will further help keep your computer clean and gorgeous!

Case Type	Mid-Tower
Motherboard Type	Mini ITX / Micro ATX / ATX
Dimensions	195 (W) x 473 (H) x 427 (D)mm
Case Drive Bays	3.5" : 2 2.5" : 2+2 (Converted from 3.5" Drive Bays)
I/O Panel	USB3.0 x 1, USB2.0 x 1, Mic x 1, Audio x 1
Maximum Number of Fans	5 max Front : 120mm x 2 Top : 120mm x 2 Rear : 120mm x 1 (Pre-installed)
Cooling Fan Support	
Cable Management	Yes
Water Cooling Radiator Support	Front : 240mm Top : 120mm Rear : 120mm
Expansion Slots	7
Max. Graphic Card Length	350mm
Max. CPU Cooler Height	160mm
Transparent Side Panel	Tempered Glass
PSU	Standard ATX PS2

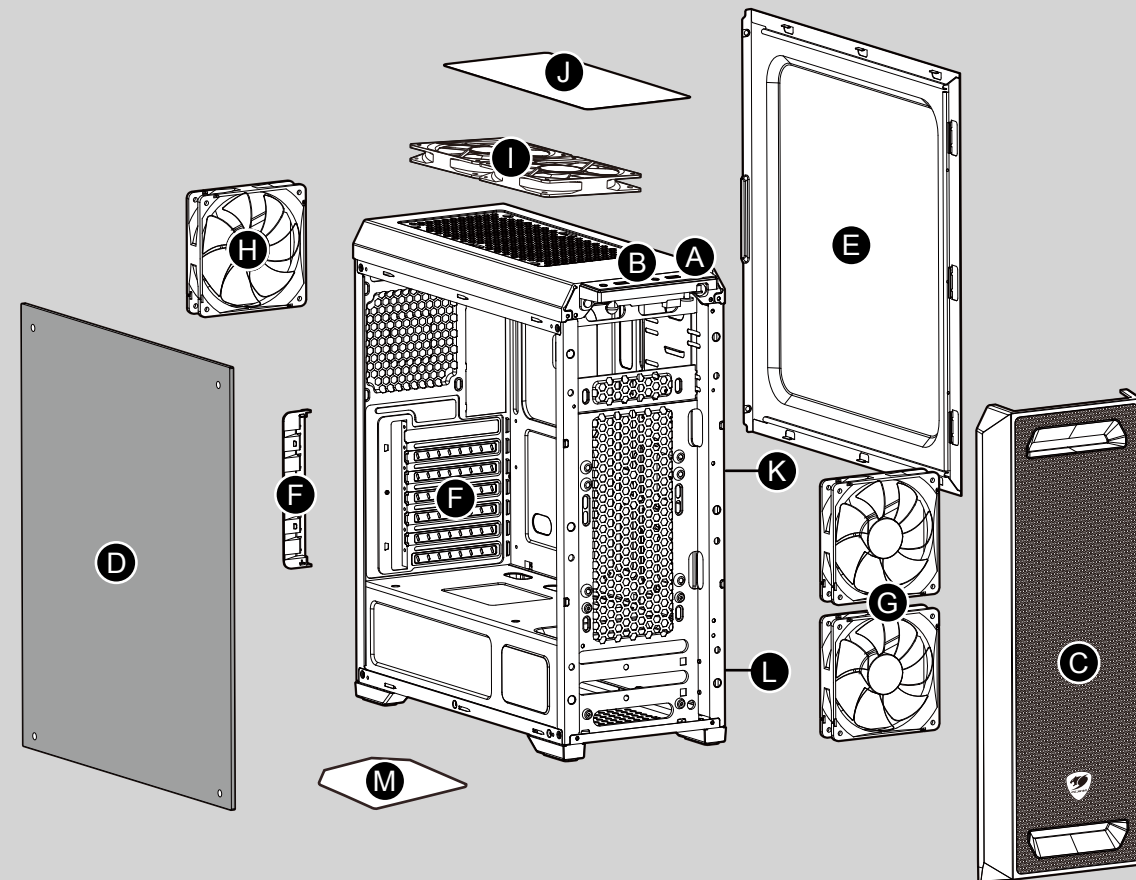
Specifications might vary depending on the country or region of sale.

COUGAR USA Technical Service  
Tel: (833) 256-3778  
Mail: rma@compucaseusa.com  
https://cougargaming.com/support/contact/upload/  
Compucase Enterprise Co., Ltd.  
No. 225, Lane 54, An Ho Road Sec. 2 Tainan, Taiwan, R.O.C  
Tel:+886-6-356-0606  
Service E-Mail:service@cougargaming.com

For more information, please visit  
[www.cougargaming.com](http://www.cougargaming.com)  
Compucase Enterprise Co., Ltd.  
All rights reserved.

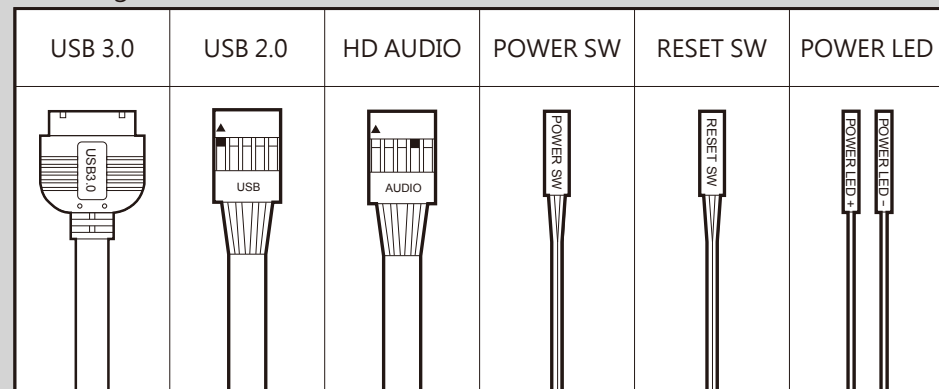


### Assembly Drawing



- A** Power button / Reset button
- B** USB 3.0 / USB 2.0 / HD audio ports
- C** Front panel
- D** Tempered glass side cover
- E** Right side cover
- F** Slot covers
- G** 120mm fans for front cover (optional)
- H** 120mm fan for rear panel (pre-installed)
- I** 120mm fans for top cover (optional)
- J** Magnetic fan filter on top cover
- K** 2.5" HDD/SSD drive bays
- L** 3.5" HDD trays (compatible for 2.5" HDD/SSD)
- M** Air filter on bottom cover

### Installing the Front I/O Connectors



Specifications might vary depending on the country or region of sale.

### ENGLISH

- Tempered Glass Side Window
- Powerful Cooling: Up to Five Fans and Three Radiators
- Ultimate Graphics: Up to Three 350mm Long Graphics Cards
- Superb Cable Management: PSU and 3.5" Drive Bay Covers to Hide Cables

### ESPAÑOL

- Gran Ventana de Vidrio Templado
- Potente Refrigeración: Hasta Cinco Ventiladores y Tres Radiadores
- Potentes Gráficos: Soporta Tres Tarjetas Gráficas de 350mm de Longitud
- Gran Gestión de Cables: Cubiertas para la Fuente de Alimentación y la Bahía de 3.5" en las que esconder los cables

### PORTUGUÊS

- Janela lateral de vidro temperado
- Resfriamento poderoso: até cinco ventiladores e três radiadores
- Gráficos espetaculares: até três placas gráficas com 350 mm de comprimento
- Excelente gerenciamento de cabos: capas de baias PSU e de dispositivos de 3.5" para ocultar cabos

### РУССКИЙ

- Боковое окно из закаленного стекла
- Мощное охлаждение: до пяти вентиляторов и трех радиаторов
- Мощная графика: поддерживает до трех графических карт длиной 350 мм
- Превосходное управление кабелями: имеются крышки для скрытия кабелей блока питания и 3.5" жестких дисков

### ITALIANO

- Finestra laterale in vetro temperato
- Potente raffreddamento: Fino a cinque ventole e tre radiatori
- Grafica sensazionale: Fino a tre schede grafiche di 350 mm di lunghezza
- Sensazionale gestione dei cavi: Le coperture di PSU e alloggiamento unità da 3.5" nascondono i cavi

تعليمات التركيب و الأمان:  
- عند التركيب أو التفكيك يجب التأكد من أن جميع الأسلاك متصلة عن الكهرباء.  
- يجب اتخاذ الاحتياطات اللازمة لمنع الصعق الكهربائي.  
- من يقوم بعملية التركيب الشخص المختص فقط.  
- يجب ارتداء الملابس المناسبة أثناء تركيب/تجميع الكمبيوتر.

**ДАТА ИЗГОТОВЛЕНИЯ ПРОДУКЦИИ**  
год и месяц изготовления продукции указаны в серийном номере продукта. (существует 2 способа определения даты изготовления, оба способа описаны ниже)  
**A** После S/N: первые две цифры означают год, вторые две – месяц изготовления. Например, S/N: H1702000001 означает, что товар был произведен в феврале 2017 года.  
**B** После S/N: если указаны буквы, то две буквы представляют цифры из таблицы ниже, и означают год, последующие две цифры – месяц изготовления. Например, S/N: DAG02REVI000001 означает, что товар был произведен в феврале 2017 года.

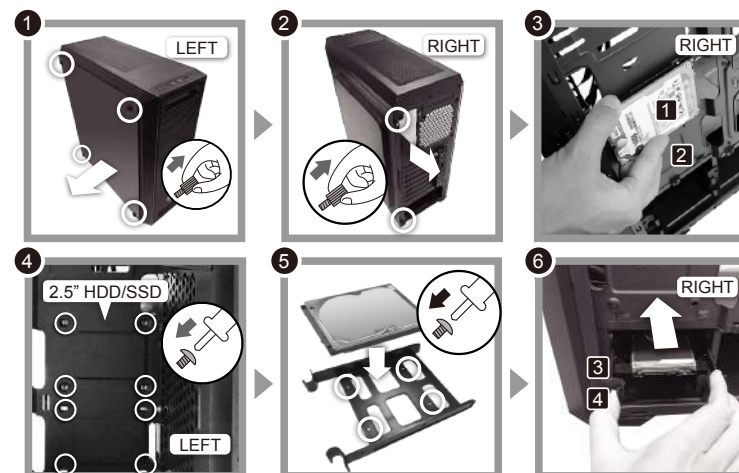
A	B	C	D	E	F	G	H	I	J
1	2	3	4	5	6	7	8	9	0

• Например, AG = 17 = 2017 год

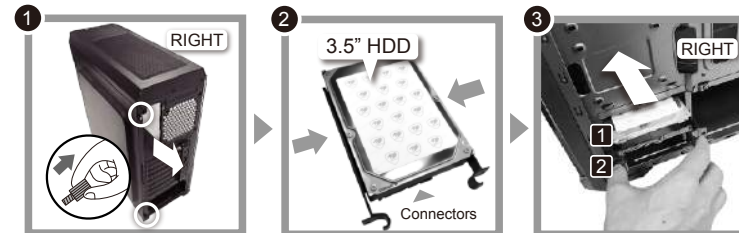
### Accessory Kit

#6-32 for PSU & Expansion Card	X 7	Cable tie for cable management	X 6
#6-32 for 3.5" HDD	X 5	Slot cover	X 1
for Main Board	X 3	#6-32 for Front Fan	X 4
M3 for Main Board, ODD & 2.5" HDD/SSD	X 14	#6-32 for 3.5" HDD tray and cage	X 2

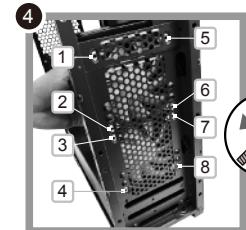
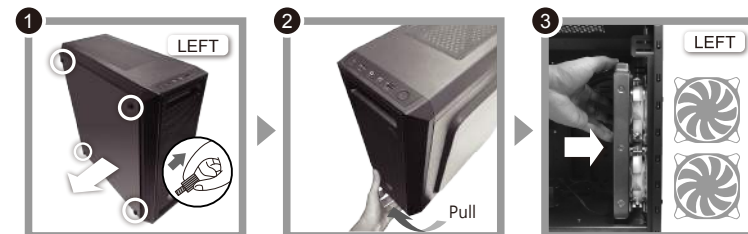
### How to install the 2.5" HDD/SSD



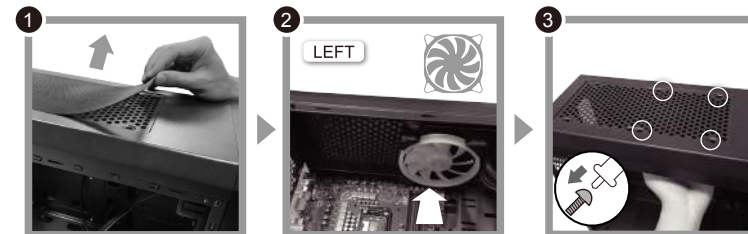
### How to install the 3.5" HDD



### How to install a water cooler (front)



### How to install a water cooler (top)



Only one cooling fan can be installed on the water cooling radiator at top cover.

### How to install a water cooler (rear)

