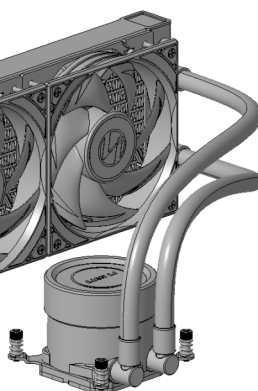
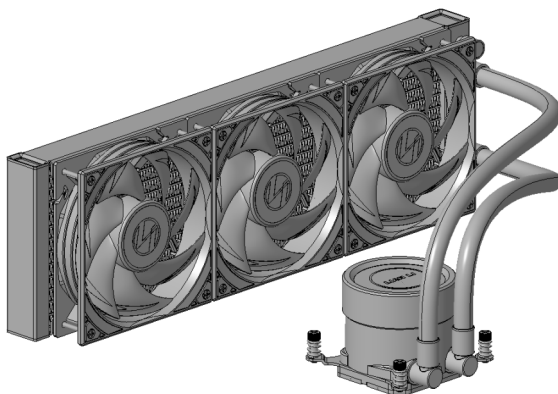


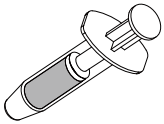

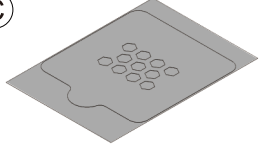

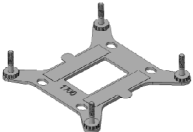
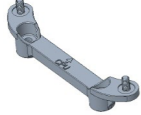



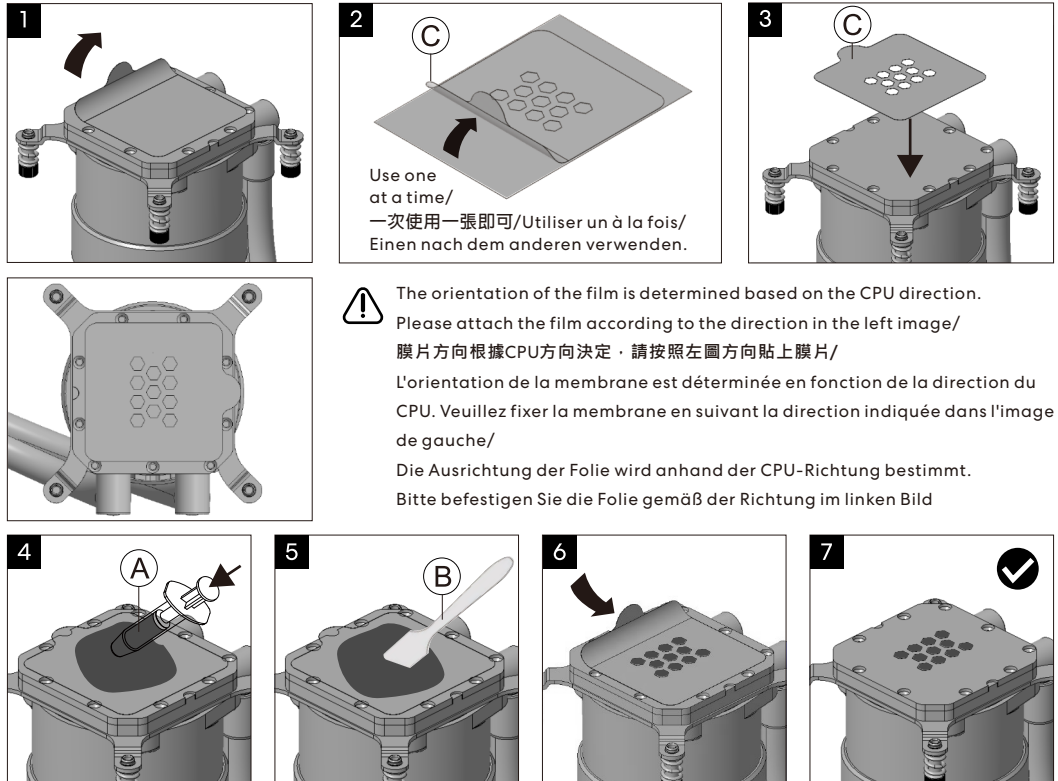
GA II LITE 240/360 RGB



INSTALLATION GUIDE/安裝指南/GUIDE D'INSTALLATION/INSTALLATIONSANLEITUNG

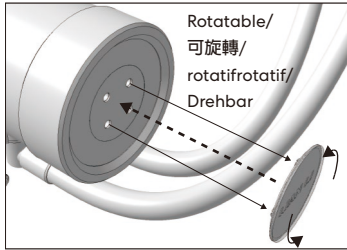
Hardware List/零件盒部品一覽表/Liste du matériel/Hardwareliste

| | | |
|--|--|--|
| <p>(A)</p>  <p>(1g) X 1</p> | <p>(B)</p>  <p>X 1</p> | <p>(C)</p>  <p>X 2</p> |
| <p>(D)</p>  <p>240 X 8 360 X 12</p> | <p>(E)</p>  <p>Intel LGA1700/1851 X 1</p> | <p>(F)</p>  <p>AMD AM4/AM5 X 2</p> |
| <p>(G)</p>  <p>X 4</p> | | |

Apply thermal paste/塗上散熱膏/Appliquer de la pâte thermique/
Wärmeleitpaste auftragen

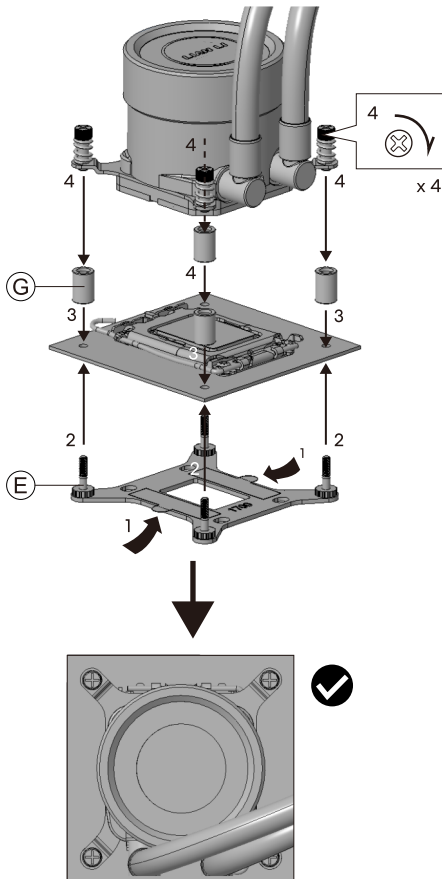
**Installation direction recommendation/安裝方向
建議/Recommandation de direction d'installation/
Empfehlung zur Installationsrichtung**

! Peel the protective film/撕下保護膜/
Décoller le film protecteur/
Die Schutzfolie abziehen

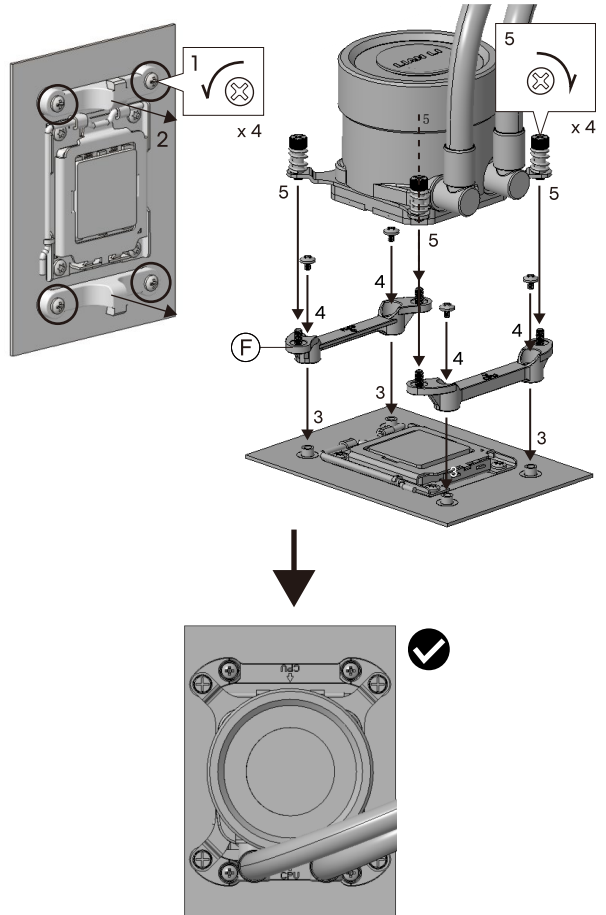


! For performance considerations, it is recommended to install the tube facing downwards/
效能考量之下，建議水管朝下安裝/Pour des raisons de performance, il est recommandé d'installer le tube vers le bas/
Aus Leistungsgründen wird empfohlen, das Rohr nach unten zu installieren.

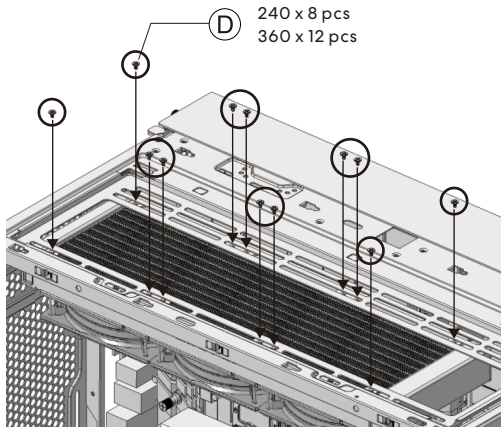
Intel LGA1700/1851



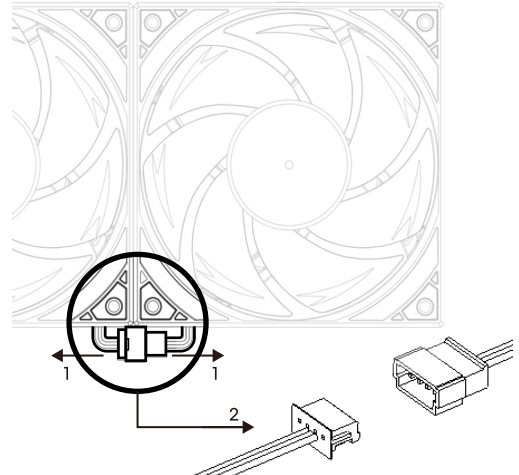
AMD AM4/AM5



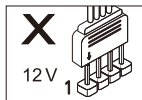
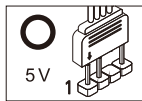
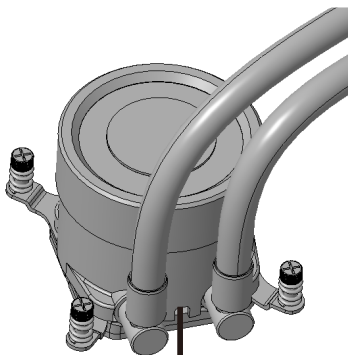
Mount in the chassis/安裝於機箱/Monter dans le châssis/Im Gehäuse montieren



Fan removal/風扇拆卸/Retrait du ventilateur/Lüfterentfernung



Cable Connection Guide/接線指南/Guide de connexion des câbles/Kabelverbindungsanleitung

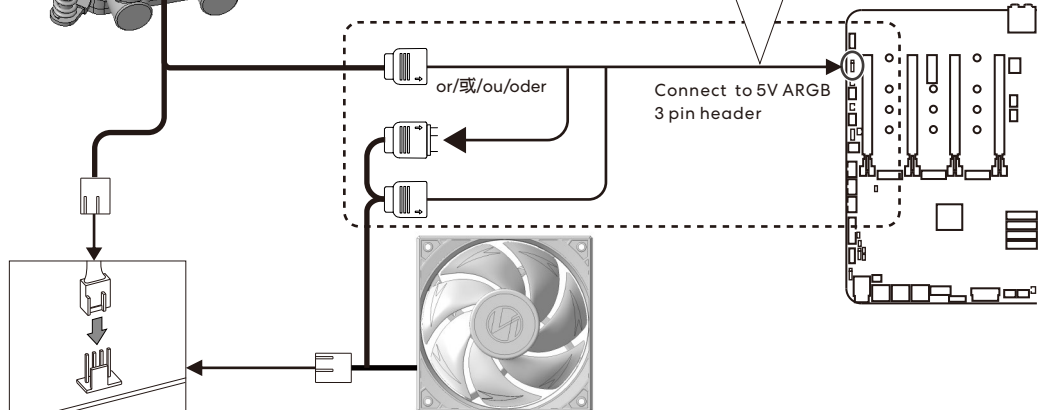


Warning! Do not connect the wrong type of LED connector. If it is connected to the 12 V connector, permanent damage will occur!

警告! 請不要連接錯誤類型的LED接頭，如果連接到12V接口，將造成永久損壞!

AVERTISSEMENT Veuillez ne pas connecter le mauvais type de connecteur LED, s'il est connecté à l'interface 12 V, cela causera des dommages permanents!

Warning! Schließen Sie nicht den falschen Typ von LED-Stecker an. Wenn er an den 12-V-Stecker angeschlossen wird, kann es zu dauerhaften Schäden kommen



4 Pin PWM