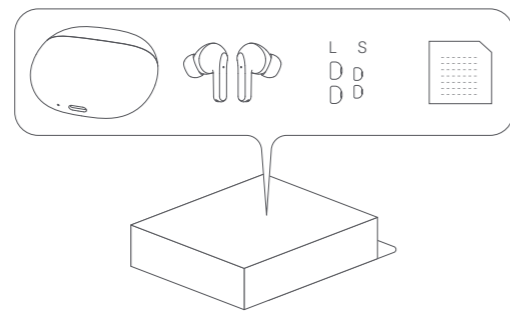
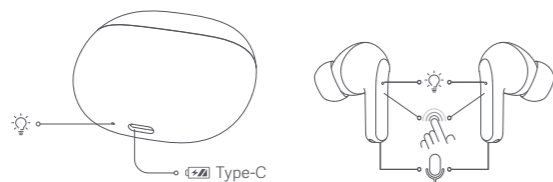


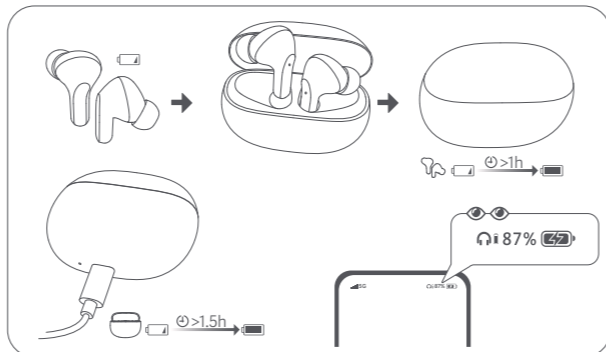
● Box Contents



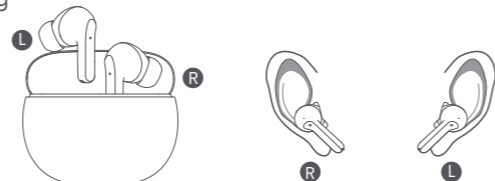
● Product Overview



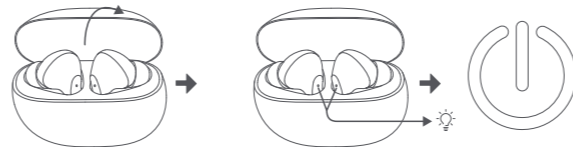
● Charging



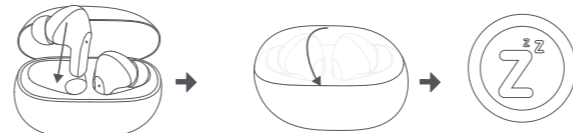
● Wearing



● Turning On

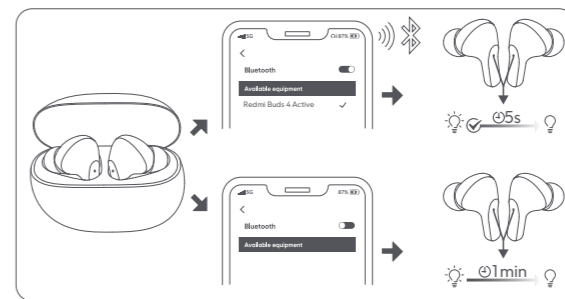


● Sleep Mode

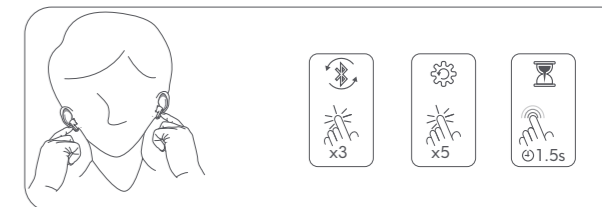


When only using one earbud, place the other into the charging case and close the lid.

● Connecting



● Function Overview



Force Pairing: Take out the earbuds from the charging box, put them on, and then triple tap the left and right ear touch areas.

Restoring Factory Settings: Ensure that the charging box is powered and the earbuds are in the charging box. After you open the charging box, take out and put on the earbuds, and within 30 seconds, press the touch areas on the left and right sides simultaneously five times (when the earbuds are not playing music or making calls). Once you hear a beep, the earbuds reset successfully and re-enter the Pairing Mode.

Turn On/Off Low Latency:
 1. When the earbuds are not in calling mode, open the charging box, take out and put on the earbuds, and long press and hold the left and right ear touch areas simultaneously for 1.5 seconds to turn on/off the Low Latency Mode.
 2. When the Low Latency Mode is enabled, put the earbuds into the charging box and close the lid to turn off the Low Latency Mode; if needed, you can press and hold the touch areas to enable this mode again.

Connecting with App

1. Scan the QR code to download and install Xiaomi Earbuds to enable more features.
2. Follow the instructions on the app to connect the earbuds.



(Android & iOS)

Scan the QR code to download Xiaomi Earbuds App.

Note: During the connection process, please make sure that the smartphone's Bluetooth is enabled. Put the earbuds into the charging box, open the lid, and ensure that your smartphone is near the box.

Specifications

Name: Wireless Earphones
 Model: M2232E1
 Charging Port: Type-C
 Earbuds Input: 5 V = 0.10A
 Charging Case Input: 5 V = 0.50A
 Charging Case Output: 5 V = 0.20A
 Wireless Connectivity: Bluetooth® Low Energy 5.3
 Operating Temperature: 0°C to 45°C
 Supported Audio Codecs: SBC
 Wireless Range: 10 m (open space without obstacles)

● This product only supports Android 8 and above or iOS systems. For detailed information, please check the product page on www.mi.com.

Note: Due to the connection characteristics of the Bluetooth signal, in dense environments with 2.4 GHz electromagnetic signal interferences, there may be occasional disconnects or no sound.

WEEE Information

All products bearing this symbol are waste electrical and electronic equipment (WEEE as in directive 2012/19/EU) which should not be mixed with unsorted household waste. Instead, you should protect human health and the environment by handing over your waste equipment to a designated collection point for the recycling of waste electrical and electronic equipment, appointed by the government or local authorities. Correct disposal and recycling will help prevent potential negative consequences to the environment and human health. Please contact the installer or local authorities for more information about the location as well as terms and conditions of such collection points.

CE Hereby, Tiinlab Corporation declares that the radio equipment type M2232E1 is in compliance with Directive 2014/53/EU. The full text of the EU declaration of conformity is available at the following internet address: <http://www.mi.com/global/service/support/declaration.html>

WARRANTY NOTICE

As a Xiaomi consumer, you benefit under certain conditions from additional warranties. Xiaomi offers specific consumer warranty benefits which are in addition to, and not instead of, any legal warranties provided by your national consumer law. The duration and conditions related to the legal warranties are provided by respective local laws. For more information about the consumer warranty benefits, please refer to Xiaomi's official website <https://www.mi.com/in/service/warranty/>. Except as prohibited by laws or otherwise promised by Xiaomi, the after-sales services shall be limited to the country or region of the original purchase. Under the consumer warranty, to the fullest extent permitted by law, Xiaomi will, at its discretion, repair, replace or refund your product. Normal wear and tear, force majeure, abuse or damage caused by the user's negligence or fault are not warranted. The contact person for the after-sale service may be any person in Xiaomi's authorized service network, Xiaomi's authorized distributors or the final vendor who sold the products to you. If in doubt please contact the relevant person as Xiaomi may identify.

The present warranties do not apply in Hong Kong and Taiwan.

Products which were not duly imported and/or were not duly manufactured by Xiaomi and/or were not duly acquired from Xiaomi or a Xiaomi's official seller are not covered by the present warranties. As per applicable law you may benefit from warranties from the non-official retailer who sold the product. Therefore, Xiaomi invites you to contact the retailer from whom you purchased the product.

Important Safety Information

- Do not attempt to disassemble, repair or modify the product, as this may cause fire or even completely damage the product.
- Do not expose the product to environments with a temperature that is too low or too high (below 0°C or above 45°C).
- Keep the product's indicator away from the eyes of children and animals while the product is in use.
- Do not use this product during thunderstorms. Thunderstorms may cause the product to malfunction and increase the risk of electric shocks.
- Do not clean this product with alcohol or other volatile liquids.
- Avoid any contact with liquids.
- Do not disassemble, puncture or crush the product nor expose it to fire.
- Do not use the earbuds while driving, and comply with the relevant regulations in your region or country.
- These earbuds and their accessories may contain small parts. Please keep them out of the reach of children.
- Disposal of a battery into fire or a hot oven, or mechanically crushing or cutting of a battery, that can result in an explosion.
- Leaving a battery in an extremely high temperature surrounding environment that can result in an explosion or the leakage of flammable liquid or gas.
- A battery subjected to extremely low air pressure that may result in an explosion or the leakage of flammable liquid or gas.
- Product information and certification marks are located in the charging case.
- Please stop using the product immediately and seek medical assistance if the contact area on your skin shows signs of redness or swelling.

- The product has a built-in battery that can not be removed or replaced. To avoid damage to the battery or the product, do not disassemble or modify the battery by yourself. The battery can only be replaced by the authorized service providers and must be replaced with the same type. Replacement of a battery with an incorrect type may defeat a safeguard (such as catching fire, explosion and leakage of corrosive electrolyte). Do not dispose of used batteries with household waste. Disposal of this product and the used batteries shall comply with local laws and regulations.
- Only use the power adapters that comply with the local safety standards or certified and supplied by qualified manufacturers.

To prevent possible hearing loss, do not use this product at high volume for long periods of time.

The symbol indicates DC voltage.

The Bluetooth® word mark and logos are registered trademarks owned by Bluetooth SIG, Inc. and any use of such marks by Xiaomi inc. is under license. Other trademarks and trade names are those of their respective owners.

For further information, please go to www.mi.com
 Manufactured for: Xiaomi Communications Co., Ltd.
 Manufactured by: Tiinlab Corporation
 (a Mi Ecosystem company)
 Address: Tiinlab Acoustic (Hunan) Technology Limited 3F, Building A4, Building 1, 2, and 3, Phase II, Mangrove R&D Innovation Area, Hengshan Science City, Group 12, Donghu Village, Yueping Town, Yanfeng District, Hengyang City, Hunan province, P.R.China 421001

Imported by:
 Xiaomi Technology India Pvt. Ltd., Orchid (Block E), Embassy Tech Village, Devarabeesanahalli, Marathahalli-Sarjapur Outer Ring Road, Bangalore - 560103, Karnataka, India.

For Consumer Complaints Contact:
 Manager, Customer Care, Xiaomi Technology India Pvt.Ltd., Ground Floor, AKR Infinity, Sy. No.113, Krishna Reddy Industrial Area, 7th Mile, Hosur Road, Bangalore-560 068, Karnataka,
 Phone No. 1800 1036286,
 Email: service.in@xiaomi.com