



xiaomi

Gaming Monitor G24i User Manual

Beijing Xiaomi Electronics Co., Ltd.
Room 802, Floor 8, Building 5, No.15 KeChuang 10th Road, Beijing Economic and Technological Development Zone, Beijing City, China.

HDMI™
HIGH-DEFINITION MULTIMEDIA INTERFACE

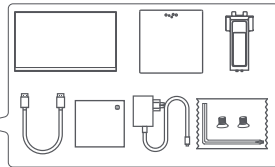
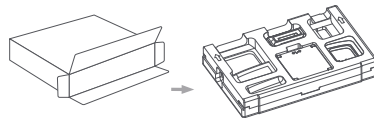
The terms HDMI and HDMI High-Definition Multimedia Interface, and the HDMI Logo are trademarks or registered trademarks of HDMI Licensing Administrator, Inc. in the United States and other countries.



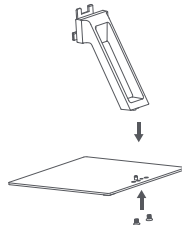
R39245
RoHS



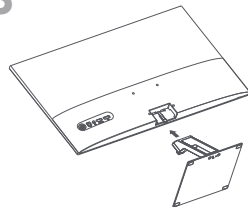
1



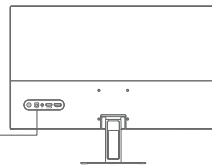
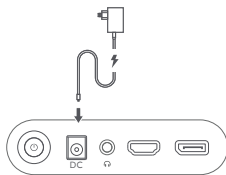
2



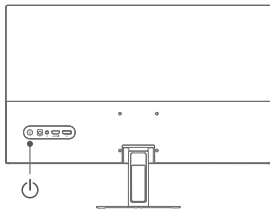
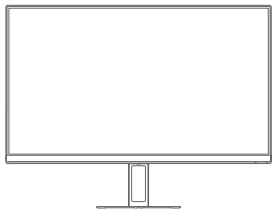
3



4



Specifications



Model: P24FCA-RGGL	
Power Input: 12 V = 3 A	DP Maximum Refresh Rate: 180 Hz
Rated Power*: 36 W Max.	HDMI Maximum Refresh Rate: 180 Hz
Screen Size: 23.8"	Tilt: -5° to +15°
Aspect Ratio: 16:9	Storage Temperature: -20°C to 60°C
Maximum Resolution: 1920 × 1080	Operating Temperature: 0°C to 40°C
Recommended Resolution: 1920 × 1080	Operating Humidity: 20%–80% RH

External AC Adapter Specifications
Model Identifier: AD-0361200300US-1
Input Voltage: 100-240 V AC
Input AC Frequency: 50/60 Hz
Output Voltage: 12 V DC
Output Current: 3 A
Output Power: 36 W
Manufacturer: Shenzhen AMC Technology Co., Ltd.

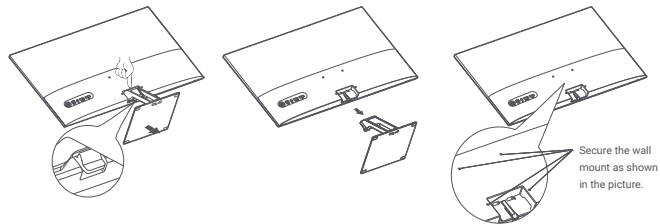
* The power of the power adapter is not included.

* The product nameplate is located on the bottom of the monitor.

Function Button Description		
Button Operation	Result	
	When menu is not displayed on the monitor.	When main menu is displayed on the monitor.
Short press to right.	Enter the main menu.	Enter/select.
Short press to up/down.	Open brightness.	Switch menu adjusting values.
Short press to left.	Open signal source switching list.	Return.
Short press the middle.	Turn the monitor on /Open the shortcut menu.	Enter/select.
Press and hold for 3 seconds.	Shutdown.	

Wall mounting

- For installation methods and precautions, please refer to the installation guide of the wall mount you purchased.
- The wall mount must be purchased separately.
- Tip: This product is compatible with wall mounts that have a hole spacing of 75 × 75 mm.
- The bolts used to secure the wall mount must meet the following requirements: Quantity: 4; Thread: M4; Length: 10 mm.
- Lay the monitor flat, with its back facing upwards. Use your finger to press the spring clip that joins the base to the monitor and remove the base.
- Note: When removing the base, be careful not to pinch your finger in the spring clip.
- Follow the wall mount user manual and install the wall mount onto the bolts that are built into the housing back.



Secure the wall mount as shown in the picture.

Troubleshooting		
Issue	Possible Cause	Solutions
Unable to turn on.	No power.	Make sure the power adapter is plugged in properly.
Image is dark.	Brightness/Contrast not adjusted properly.	Adjust the brightness and contrast.
Image is jittery or has ripples.	Interference.	Keep the monitor away from electronic devices that may cause electrical interference.
No image on the screen.	No signal, entering sleep mode.	Turn on the computer. Make sure the computer's graphics card is working properly. Make sure the cable is plugged in properly.
The monitor displays that the current resolution is not supported.	Resolution is incorrect.	Use the specified recommended resolution settings.

Important precautions

- Do not use this monitor in damp or humid environments such as bathrooms, kitchens, basements, or near swimming pools.
- Make sure the monitor is placed on a stable surface. If the monitor falls down or is knocked over, it may cause personal injury or damage to the monitor.
- Store and use the monitor in a cool, dry, and ventilated place. Keep the monitor away from radiation and heat sources.
- Do not cover or block the heat dissipation vents on the back of the monitor. Do not place the monitor on a bed, sofa, blanket, etc.
- The monitor's operating voltage range is indicated on a label on the back of the monitor. If you are unsure what voltage your power supply is, please contact the monitor's distributor or local power company.
- If you do not plan to use the monitor for a long period of time, unplug it from the electrical outlet so as to prevent possible damage from power surges or lightning strikes.
- Do not overload electrical outlets, as this may cause a fire or an electric shock.
- Do not attempt to disassemble or repair the monitor by yourself to avoid the risk of an electric shock. If the monitor is not functioning properly, please contact the after-sales service department for help.
- Do not excessively pull, twist, or bend the power cord.
- The power plug is a means of disconnecting the equipment from the mains. No loose items should be placed around the power plug to make sure that it can be easily plugged or unplugged.
- For pluggable devices, the output socket should be easily accessible.
- Note: When adjusting the tilt angle of the monitor, it is recommended that you support the base with one hand and adjust the monitor with the other hand. The monitor can easily tip over if you adjust it with only one hand.

Eye Health

To avoid eyestrain, or neck, arm, elbow, and shoulder pain caused by using the computer for a long time, please follow the suggestions listed below:

- Keep the monitor at a distance of 20–28 inches (approx. 50–70 cm) from your eyes.
- Blink more often to relieve eye fatigue when staring at the monitor.
- Give your eyes a 20-minute break after using the monitor for two hours.
- Take your eyes off the monitor and look at something a certain distance away for at least 20 seconds.
- Stretch your body to help relieve tension on the neck, arms, back, and shoulders.

Low Blue Light Description

In recent years, eye damage caused by blue light has attracted more and more attention. In general, the wavelength of blue light is 400–480 nm, and the wavelength of harmful blue light is 415–455 nm. This monitor has a function to help reduce your exposure to the blue light emission. You can enable the low blue light mode via the settings menu.

Federal Communications Commission (FCC) Statement:

This device complies with part 15 of the FCC Rules. Operation is subject to the following two conditions: (1) This device may not cause harmful interference, and (2) this device must accept any interference received, including interference that may cause undesired operation.

Warning: Any changes or modifications to this unit not expressly approved by the party responsible for compliance could void the user's authority to operate the equipment.

Note: This equipment has been tested and found to comply with the limits for a Class B digital device, pursuant to part 15 of the FCC Rules. These limits are designed to provide reasonable protection against harmful interference in a residential installation. This equipment generates, uses and can radiate radio frequency energy and, if not installed and used in accordance with the instructions, may cause harmful interference to radio

communications. However, there is no guarantee that interference will not occur in a particular installation. If this equipment does cause harmful interference to radio or television reception, which can be determined by turning the equipment off and on, the user is encouraged to try to correct the interference by one or more of the following measures:

- Reorient or relocate the receiving antenna.
- Increase the separation between the equipment and receiver.
- Connect the equipment into an outlet on a circuit different from that to which the receiver is connected.
- Consult the dealer or an experienced radio/TV technician for help.

CAN ICES-003 (B) / NMB-003 (B)

WARRANTY NOTICE

THIS LEGAL WARRANTY NOTICE INFORMS YOU ABOUT YOUR RIGHTS UNDER THE LEGAL WARRANTY. FOR A FULL UNDERSTANDING OF YOUR

RIGHTS YOU ARE INVITED TO CONSULT THE LAWS OF YOUR COUNTRY, PROVINCE OR STATE. The duration and conditions related to the legal warranties are provided by respective local laws. For more information about the consumer warranty benefits, please refer to Xiaomi's official website <https://www.mi.com/global/support/warranty>. If you have purchased the Product directly from Xiaomi. In all other cases, please consult your seller.

There is no guarantee that the operation of the Product will be uninterrupted or error free. Damages arising from non-compliance with the instructions related to the use of the Product are excluded. If a hardware defect is found within the Warranty period, the Product will be either (1) repaired, (2) replaced, or (3) refunded, depending on your rights under local laws. Normal wear and tear, force majeure, abuse or damage caused by the user's negligence or fault are not warranted. The contact person for the after-sales service may be any person in Xiaomi's authorized service network, Xiaomi's authorized distributors or the final vendor who sold the Products to you.

The present warranty does not apply in Hong Kong and Taiwan.

Products which were not duly imported and/or were not duly manufactured by Xiaomi and/or were not duly acquired from Xiaomi or a Xiaomi's official seller are not covered by the present warranties. As per applicable law you may benefit from warranties from the non-official retailer who sold the Product. Therefore, Xiaomi invites you to contact the retailer from whom you purchased the Product.

Importer:
Beryko s.r.o.
Pod Vinicemi 931/2, 301 00 Plzeň
www.berko.cz



72-P24FUS-800Z1