

Wireless Mouse WM-410 User Manual

Dear Customer,

Thank you for choosing our products.

We are pleased to offer you appliances and devices designed and manufactured to the highest standards of quality, functionality, and design. Before using the device, please read this manual carefully. It contains important information regarding your safety, as well as recommendations for the proper use and care of the product. Please keep this manual in a safe place and use it as a reference guide during future operation of the product.

Intended use

The mouse is a device for controlling the cursor and issuing various commands to the computer.

Specifications

- Model: WM-410.
- Trademark: Aceline.
- Power supply: 3 V = 15 mA.
- Mouse type: LED sensor.
- Sensor resolution: 1000, 1200, 1600 dpi.
- Connection: USB 2.0; 2.4GHz band.
- Wireless standard: IEEE 802.15.4.
- Radio spectrum: 2402–2480 MHz.
- Transmit power: 0 dBm.
- Battery type: AAA.
- Material: Plastic.
- Compatible OS: Windows, macOS, Linux.
- Scope of application: Domestic.

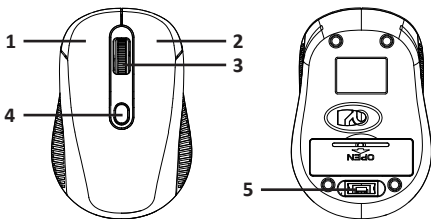
Package Contents

- Device.
- USB dongle.
- AAA batteries (2 pcs).
- User manual.

Safety Precautions

- Do not make any modifications to the device.
- To avoid short circuits, do not expose the device to any liquids, and do not place open containers of liquid near it.
- Do not expose the device to electromagnetic radiation.
- This device is not intended for commercial use.
- This device is not intended for use by persons (including children) with reduced physical, sensory or mental capabilities, or lack of experience and knowledge, unless they have been given supervision or instruction concerning use of appliance by a person responsible for their safety. Children should be supervised to ensure that they do not play with the device.

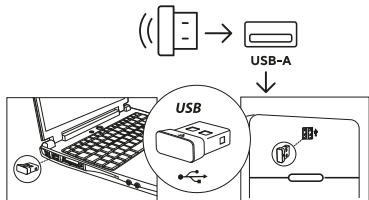
Device Diagram



1. Left button.
2. Scroll wheel.
3. Right button.
4. DPI button.
5. USB dongle.

Operating Instructions

1. Insert 2 AAA batteries (included) into the battery compartment, observing the polarity. Securely close the compartment cover.
2. Take the mouse dongle and connect it to a USB port on your computer.



3. Wait for the device installation wizard to complete on your computer.
4. The device is ready for use.

Rules and Conditions for Installation, Storage, Transportation, Sale (Distribution), and Disposal

- This device requires no assembly or mounting.
- The device must be stored in its original packaging, on heated premises, both at the manufacturer's and at the consumer's sites. The ambient temperature should be between +5 °C and +40 °C, and the relative humidity should not exceed 80% (non-condensing). The storage area must be free from aggressive contaminants (e.g., acid or alkali vapors) that could cause corrosion.
- The device must be transported in a dry place.
- The device requires careful handling. Protect it from exposure to dust, dirt, impact, moisture, fire, and other hazards.
- Sale or distribution of the device must be carried out in accordance with local legislation.
- Upon expiration of the device's service life, it must not be disposed of with unsorted household waste. Instead, it must be taken to an authorized collection point for electrical and electronic equipment for subsequent recycling and disposal in accordance with federal or local legislation. By ensuring proper disposal of this product, you help conserve natural resources and prevent potential harm to the environment and human health that may result from improper handling. For more detailed information about collection and disposal points for this product, please contact your local municipal authorities or your household waste disposal service.
- If a device malfunction is detected, immediately contact an authorized service center or dispose of the device.
- When the batteries included with the device reach the end of their service life, do not dispose of them with other household waste. The device and batteries must be disposed of in accordance with local waste recycling regulations to prevent potential harm to the environment from uncontrolled waste disposal.

Warranty Information

The manufacturer guarantees the device will function properly throughout the warranty period and be free from defects in materials and assembly. The warranty period commences on the date of purchase and applies to new products only. Warranty service includes free repair or replacement of defective parts that fail during the warranty period, provided the failure is not caused by consumer misuse and the product is operated in accordance with the user manual. Repairs or part replacements shall be performed at authorized service centers.

Warranty Period: 12 months.

Service Life: 18 months.

For the up-to-date list of authorized service centers, please visit:

<https://www.dns-shop.ru/service-center/>

Additional Information

Manufacturer: SHENZHEN YUANYICHANG TECHNOLOGY CO., LTD.

Building B, No.60, Zhuang Village Road, Xiner Industrial Park, Xinqiao Street, Bao'an District, Shenzhen City, Guangdong Province, China.

Made in China.

The product meets the requirements of the CU TR (EAEU).

Product specifications, information and appearance are subject to change without prior notice, for quality improvement of our products.

Production date (mm.yyyy): _____ v.5

