

Panasonic

Operating Instructions

(Household use) Epilator

ES-EY90

ES-EY80

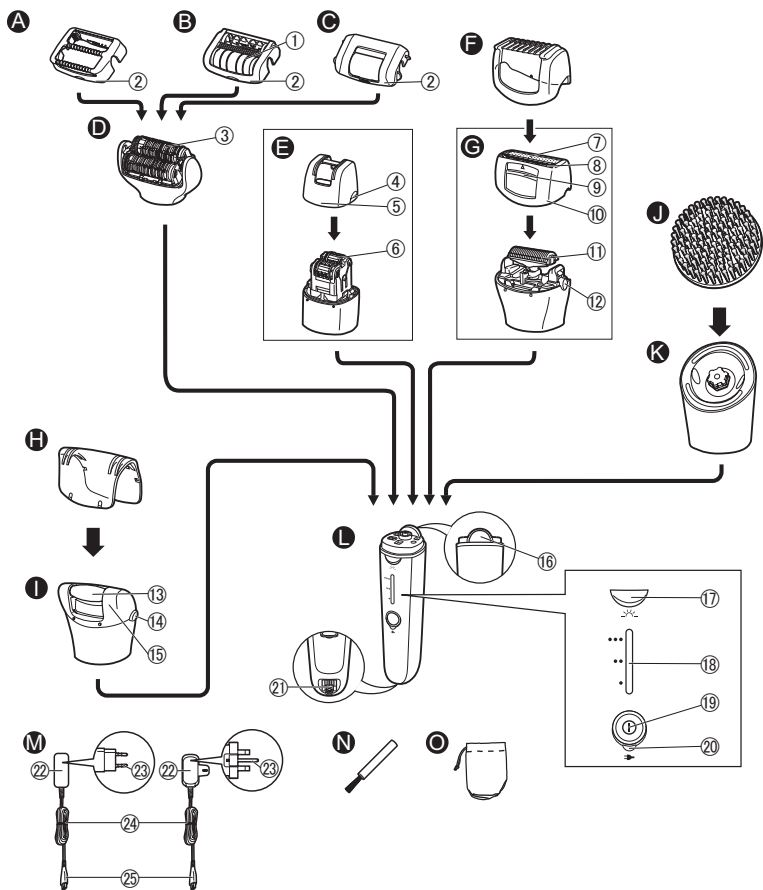
Model No. ES-EY70

ES-EY31

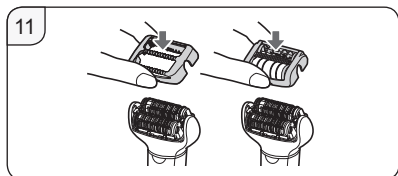
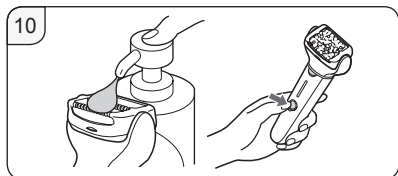
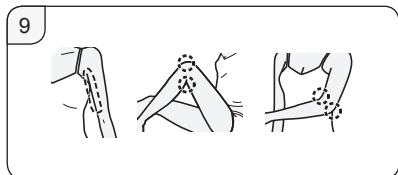
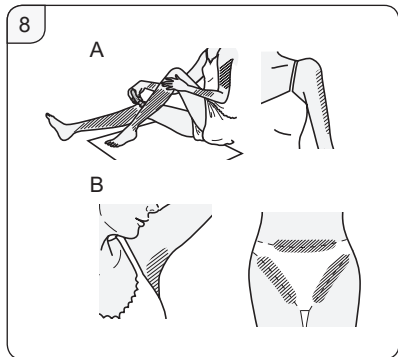
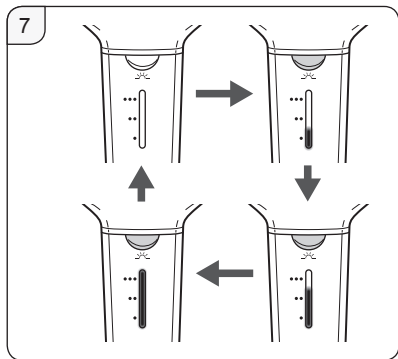
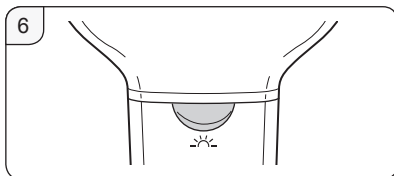
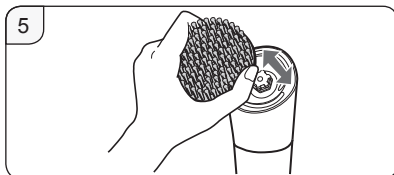
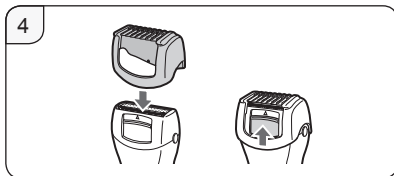
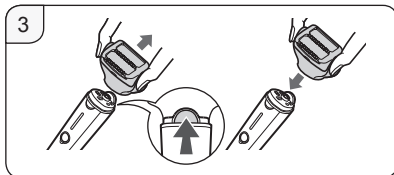
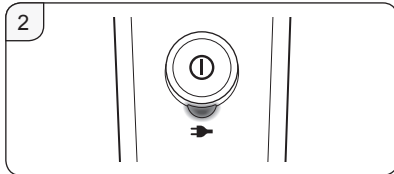
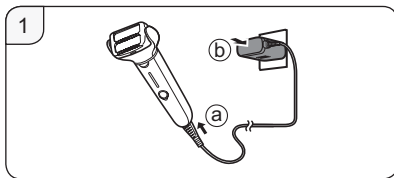
ES-EY30

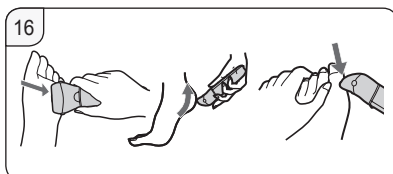
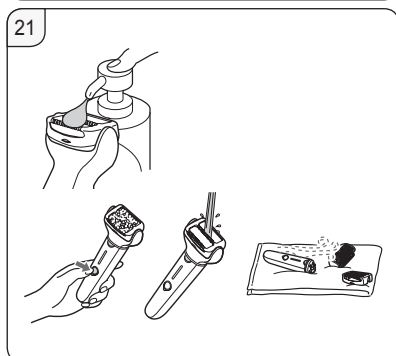
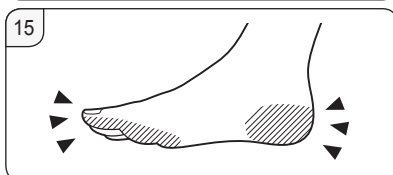
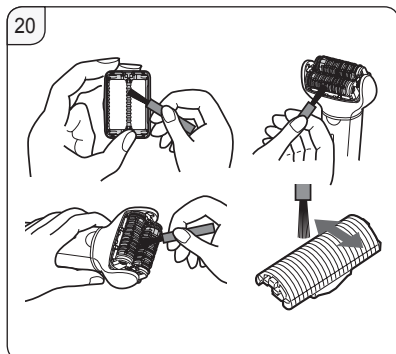
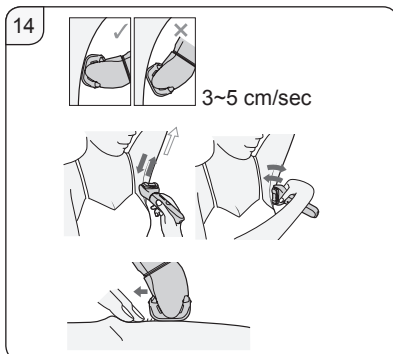
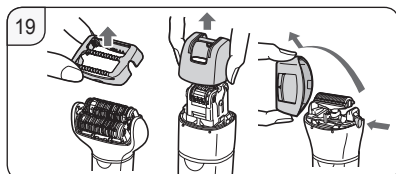
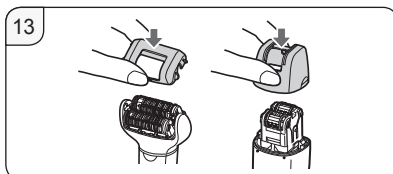
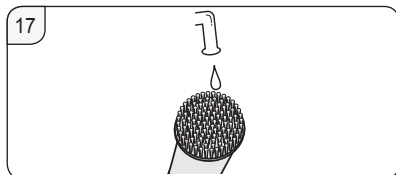
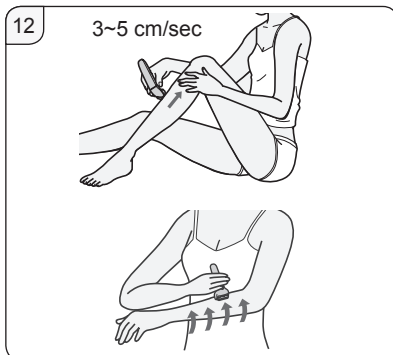


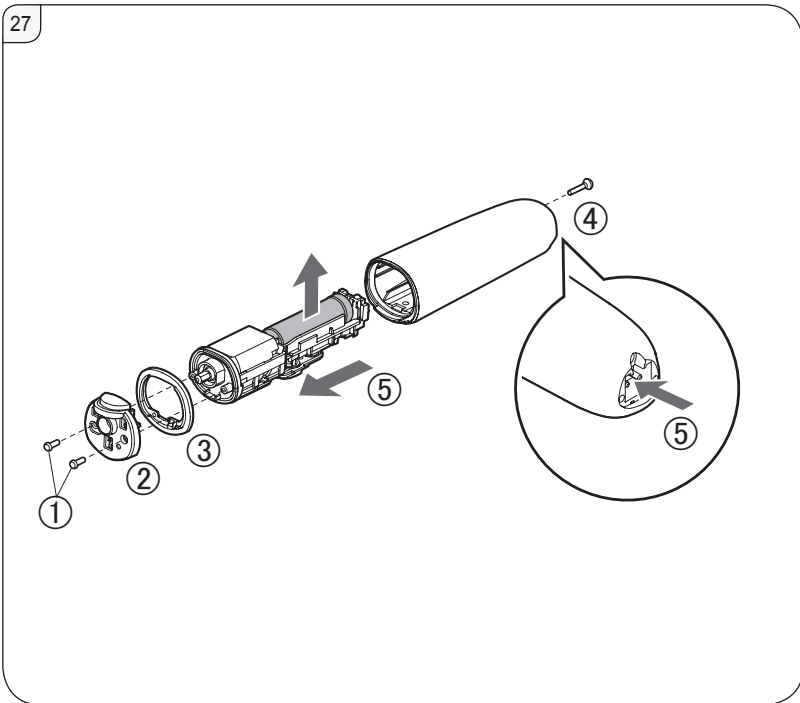
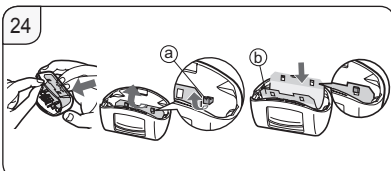
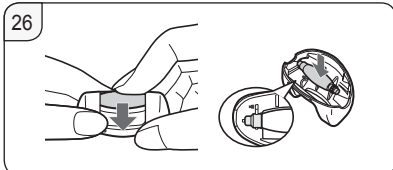
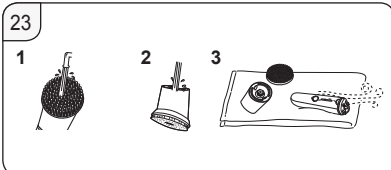
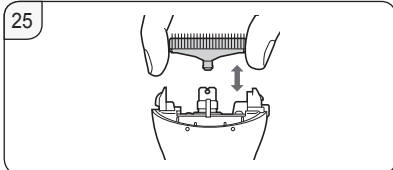
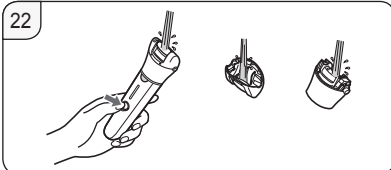
CE



Attachments	ES-EY90	ES-EY80	ES-EY70	ES-EY31	ES-EY30
A	✓	✓	✓	✓	✓
B	✓	✓	✓		
C					✓
D	✓	✓	✓	✓	✓
E	✓	✓	✓	✓	
F	✓				
G	✓				
H	✓	✓	✓		
I	✓	✓	✓		
J	✓	✓			
K	✓	✓			







WARNING

- This appliance can be used by children aged from 8 years and above and persons with reduced physical, sensory or mental capabilities or lack of experience and knowledge if they have been given supervision or instruction concerning use of the appliance in a safe way and understand the hazards involved. Children shall not play with the appliance. Cleaning and user maintenance shall not be made by children without supervision.
- The supply cord cannot be replaced. If the cord is damaged, the AC adaptor should be scrapped.
- Do not use anything other than the supplied AC adaptor for any purpose. Also, do not use any other product with the supplied AC adaptor. (See page 14.)

- The following symbol indicates that a specific detachable power supply unit is required for connecting the electrical appliance to the supply mains. The type reference of power supply unit is marked near the symbol.



► Using the head of epilation/ shaver, and the brush

- The heads and brush can be used when wet.
The following symbol means suitable for use in a bath or shower.



► Using the foot care head

- The foot care head is washable.
The following symbol means that the foot care head can be cleaned under the water.






- Detach the main body from the AC adaptor before cleaning it in water.

Safety precautions

Make sure to follow these instructions.

To prevent accidents, injuries or damage to property, please follow the instructions below.

- **The following chart indicates the degree of damage caused by improper operation.**

 DANGER
Indicates potential hazard that will result in serious injury or death.
 WARNING
Indicates potential hazard that could result in serious injury or death.
 CAUTION
Indicates potential hazard that could result in minor injury or property damage.

WARNING

► **Power supply**

- **Do not damage or modify, or forcefully bend, pull, or twist the cord. Also, do not place anything heavy on or pinch the cord.**
- **Do not immerse the AC adaptor in water or wash it with water.**
- **Do not place the AC adaptor over or near water filled sink or bathtub.**
 - Doing so may cause electric shock or fire due to a short circuit.
- **Do not connect or disconnect the adaptor to a household outlet with a wet hand.**
 - Doing so may cause electric shock or injury.
- **Do not use in a way exceeding the rating of the household outlet or the wiring.**
 - Exceeding the rating by connecting too many plugs to one household outlet may cause fire due to overheating.

- **Always ensure the appliance is operated on an electric power source matched to the rated voltage indicated on the AC adaptor.**
- **Fully insert the adaptor.**
 - Failure to do so may cause fire or electric shock.

► **This product**

- **This product has a built-in rechargeable battery. Do not throw into flame or heat. Do not charge, use, or leave in high temperatures.**
 - Doing so may cause overheating, ignition, or explosion.
- **Do not modify or repair.**
 - Doing so may cause fire, electric shock, or injury. Contact an authorized service centre for repair (battery change etc.).
- **Never disassemble except when disposing of the product.**
 - Doing so may cause fire, electric shock, or injury.

► **In case of an abnormality or malfunction**

- **Immediately stop using and remove the adaptor if there is an abnormality or malfunction.**
 - Failure to do so may cause fire, electric shock, or injury.
- <Abnormality or malfunction cases>
- **The main body, adaptor or cord is deformed or abnormally hot.**
- **The main body, adaptor or cord smells of burning.**
- **There is abnormal sound during use or charging of the main body.**
 - Immediately request inspection or repair at an authorized service centre.

► **Preventing accidents**

- **Do not place within reach of children or infants. Do not let them use it.**
 - Doing so may cause an accident or injury due to accidental ingestion of the inner blade, brush, etc.

► **Cleaning**

- **Always unplug the adaptor from a household outlet when cleaning.**
 - Failure to do so may cause electric shock or injury.

WARNING

- **Regularly clean the power plug and the appliance plug to prevent dust from accumulating.**
 - Failure to do so may cause fire due to insulation failure caused by humidity. Disconnect the adaptor and wipe with a dry cloth.

CAUTION

► To protect the skin

- **The following persons should not use this appliance:**
 - Persons suffering from atopic dermatitis or rashes and other skin diseases
 - Persons with allergic diathesis or persons who are easily irritated by cosmetics, clothing, metals, etc.
 - Persons who are easily suppurated
 - Persons suffering from varicose veins, diabetes, hemophilia, etc.
 - Persons who have trouble stopping bleeding
- Use in such cases may cause the skin to become sensitive or cause inflammation, bleeding, or increased pain.
- **Do not use in the following cases:**
 - During menstruation, pregnancy, or about one month after giving birth
 - When you are not well or when you feel an abnormality in your skin or body
 - After drinking alcohol, taking medicine, or when you are very tired
- Use in such cases may cause the skin to become sensitive or cause inflammation, bleeding, or increased pain.
- **Do not use in the following body areas:**
 - Injury, rash, moles, bruises, warts, pimples, etc.
 - On suntanned skin
- Doing so may cause injury, inflammation of the skin, or bleeding.
- **Do not press on the blade too strongly when using the shaver head.**
 - Doing so may cause damage which results in injury to the skin.

- **Do not touch the blade section (metallic section) of the inner blade when using the shaver head.**
 - Doing so may cause injury to your hands.
- **Do not use with the frame removed.**
 - Doing so may cause finger injury or cause hair or clothing entanglement and damage.
- **Do not use soap with a scrubbing or peeling effect.**
 - Doing so may cause injury to the skin, color stains or other skin trouble.
- **Always attach the sensitive area cap for underarms/bikini-line when epilating your underarms and bikini-line. Do not use the fast cap for legs/arms or the gentle cap for legs/arms.**
 - Failure to do so may cause injury, inflammation, or increased pain.
- **Store the shaver head with the bikini comb attached.**
- **Store the skin protector and the outer foil with care, for those are fragile.**
 - Failure to do so may result in deformation or damage to the skin protector or outer foil, which may cause injury to skin.
- **Before using, check that the skin protector, disc, blade, frame and brush are free from deformities, cracks, and damage.**
 - Failure to do so may cause injury to the skin.
- **Apply the skin protector and the epilation discs at a 90° angle to your skin with gentle force.**
 - Failure to do so may cause injury to the skin or cause hair or clothing entanglement and damage.
- **If skin problems continue for 2 days or longer after treatment, stop using the appliance and contact a dermatologist.**
 - Failure to do so may cause symptoms to worsen.
- **Turn the switch off when the appliance becomes hot, and use the appliance only after it has cooled.**
 - Failure to do so may cause low temperature burns.

CAUTION

► About using the epilation/shaver head

• Do not use in the following body area:

- Face, genitals and genital area, or thighs
- Inner side of the upper arms and areas such as elbows or knees which are prone to sagging
- Doing so may cause injury, inflammation of the skin, or bleeding.

• The following persons should not use this appliance:

- Persons who have suffered skin problems (suppuration, inflammation, etc.) caused by epilation (plucking, depilation, waxing, etc.)
- Use in such cases may cause the skin to become sensitive or cause inflammation, bleeding, or increased pain.

• Do not use epilation/shaver head in the following ways:

- Using just before swimming or sea bathing (use at least 2 days before such activities)
- Using just before bathing
- Engaging in extreme sports or exercise right after epilation
- Doing so may cause infection or inflammation resulting from bacteria that enter the body through the pores.

• Do not apply strong pressure to the skin, move repeatedly over the same area or move back and forth in one area. Also, do not use with a jabbing motion.

- Doing so may cause injury or inflammation of the skin, or increased pain.

► About using the foot care head

• Do not use on blisters and corns.

- Doing so may cause injury, inflammation of the skin, or bleeding.

• Do not use foot care head in the following ways:

- Filing too deeply
- Letting the file touch soft skin
- Using the foot care head in the bath
- Doing so may cause injury to the skin, infection, inflammation, bleeding, other trouble, or worsening of such symptoms.

• People suffering from poor circulation in the feet; or swelling, itchiness, pain, or excessive warmth in the feet should consult their doctor before using the foot care head.

• If skin appears abnormal after filing, stop using the foot care head and consult a dermatologist.

• File the hardened skin little by little over a few days.

• File only calluses or hardened skin on your feet.

- Failure to follow the above instruction may cause injury to the skin, infection, inflammation, bleeding, other trouble, or worsening of such symptoms.

► About using the scrub brush

• Do not use in the following body area:

- Face, throat, genitals and genital areas
- Doing so may cause injury, inflammation of the skin, or bleeding.

• Do not use scrub brush in the following ways:

- Apply with strong pressure to the skin
- Use continuously for long periods of time on the same area
- Doing so may cause injury to the skin, infection, inflammation, bleeding, other trouble, or worsening of such symptoms.

• Use to remove calluses on the knees or elbows.

- Failure to do so may cause injury, inflammation of the skin, or bleeding.

► Note the following precautions

• Do not share with your family or others.

- Doing so may cause infection or inflammation.

CAUTION

- **Do not allow metal objects or trash to adhere to the power plug or the appliance plug.**
 - Doing so may cause electric shock or fire due to a short circuit.
- **Disconnect the adaptor from the household outlet when not charging.**
 - Failure to do so may cause electric shock or fire due to electrical leakage resulting from insulation deterioration.

Handling of the removed battery when disposing

DANGER

- **The rechargeable battery is exclusively for use with this appliance. Do not use the battery with other products.**
- **Do not charge the battery after it has been removed from the product.**
- **Do not throw into fire or apply heat.**
- **Do not hit, disassemble, modify, or puncture with a nail.**
- **Do not let the positive and negative terminals of the battery get in contact with each other through metallic objects.**
- **Do not carry or store the battery together with metallic jewellery such as necklaces and hairpins.**
- **Do not use or leave the battery where it will be exposed to high temperatures, such as under direct sunlight or near other sources of heat.**
- **Never peel off the tube.**
 - Doing so may cause overheating, ignition, or explosion.

WARNING

- **After removing the rechargeable battery, do not keep it within reach of children and infants.**
 - The battery will harm the body if accidentally swallowed.
If this happens, consult a physician immediately.

- **If the battery fluid leaks out and comes in contact with the eyes, do not rub the eyes, and thoroughly rinse with clean water, such as tap water.**

- Failure to do so may cause eye injury.
Consult a physician immediately.

CAUTION

- **If the battery fluid leaks out and comes in contact with the skin or clothes, rinse off with clean water, such as tap water.**

- Failure to do so may cause inflammation.

Important information

- Do not use alcohol or nail polish remover, etc. to clean the appliance. Doing so may cause failure, cracking or discoloration of the main body.
- Keep the appliance away from sinks, bathrooms or other high-humidity areas where it could be exposed to water and moisture after use.
- Keep the appliance away from where it will be exposed to high temperatures or direct sunlight.
- When storing, always attach the protection cap for the foot care head and shaver head.
- Charge the appliance correctly according to these Operating Instructions. (See page 14 "Charging".)
- This appliance contains a battery that is only replaceable by skilled persons. Please contact an authorized service centre for the details of repair.

Parts identification (See page 3.)

- A** Fast cap for legs/arms
- B** Gentle cap for legs/arms (➔ Page 16)
- C** Sensitive area cap for underarms/
bikini-line
 - ① Skin protector
 - ② Frame
- D** Epilation head
 - ③ Epilation discs
- E** Small epilation head for
underarms/bikini-line
 - ④ Frame release ribs
 - ⑤ Frame
 - ⑥ Epilation discs (inside)
- F** Bikini comb (Protection cap for
shaver head)
- G** Shaver head
 - ⑦ Outer foil
 - ⑧ Trimmer
 - ⑨ Pop-up trimmer switch
 - ⑩ Frame
 - ⑪ Inner blade
 - ⑫ Frame release button
- H** Protection cap for foot care head
- I** Foot care head
 - ⑬ File
 - ⑭ Frame release buttons
 - ⑮ Frame
- J** Scrub brush
 - * ES-EY90: Sonic scrub brush
 - ES-EY80: Deep scrub brush
- K** Brush head
- L** Main body
 - ⑯ Head release button
 - ⑰ LED light
 - ⑱ Mode lamps
 - ⑲ Power switch (power off/on/mode
selection)
 - ⑳ Charging indication/notification light
 - ㉑ Socket
- M** AC adaptor (RE7-87)
(The shape of the AC adaptor
differs depending on the area.)
 - ⑳ Adaptor
 - ㉑ Power plug
 - ㉒ Cord
 - ㉓ Appliance plug

Accessories

- N** Cleaning brush
- O** Pouch

Charging

The appliance cannot be used while charging, so make sure to fully charge it ahead of time.

Charging time: Approx. 1 hour

Epilator run time differs depending on the temperature, but it is generally 30 minutes on a one hour charge (35 minutes with the gentle cap for arms and legs).

Plug the AC adaptor into the epilator (a) and a household outlet (b). (Fig. 1)

Charging indication/notification light [●20] glows red while charging (Fig. 2), turns off when charged, and blinks twice a second if there is an error.

- Charge the appliance at an ambient temperature of 15 °C – 35 °C. Charging outside this range may result in longer charging times or failure to charge.
- Charging time may change depending on the remaining battery.
- Charging the appliance after each use does not affect the life of the rechargeable battery.
- When charging the appliance for the first time or after 6 months of not being used, charging time may vary. The charging indication/notification light may remain off for a few minutes but will glow eventually.
- If there is noise from the radio or other sources while using or charging the appliance, move to a different location to use the appliance.

<Check charging status>

Unplug and then plug the appliance in again while charging to confirm that the charging indication/notification light glows and turns off after 5 seconds.

Before use

Removing and attaching the head

Push and hold the head release button to remove the head and push it until it clicks. (Fig. 3)

Bikini comb **ES-EY90**

Place the bikini comb onto the shaver head and slide trimmer up. (Fig. 4)

- Once in place, make sure the bikini comb is in close contact with the skin.

Removing and attaching the scrub brush (Fig. 5)

ES-EY90/EY80

<Removing>

Holding the brush by its side, remove from the brush head.

<Attaching>

Press firmly until it clicks.

<LED light> (Fig. 6)

The LED light glows and remains on when the power is on.

This product has a built-in pressure sensor, and the LED light blinks if you press too hard against your skin.

<Mode selector> (Fig. 7)

- There are 3 disc rotation speeds. Try SOFT mode to avoid irritation when removing hairs.
- Press the power switch to switch between ●(SOFT), ●●(NORMAL), ●●●(POWER) and "OFF".
- Select POWER mode when using the foot care head.

●: SOFT

The disc rotates at low speed.

- 1 Mode lamp glows blue.

●●: NORMAL

The disc rotates at standard speed.

- 2 Mode lamps glow blue.

●●●: POWER

The disc rotates at high speed.

- 3 Mode lamps glow blue.

OFF

- Turns the appliance OFF.

<Low battery level>

- The charging indication/notification light [●●] blinks once a second.
- Operating time varies depending on usage and temperature after the charging indication/notification light blinks.

Instructions

Epilation head

The fast cap and gentle cap for legs/arms should be used only for legs/arms. The sensitive area cap and small epilation head for underarms/bikini-line should be used only for underarms/bikini-line.

Areas suitable for epilating (Fig. 8)

- A. Use the fast cap and gentle cap for legs/arms.
 - B. Use the sensitive area cap or small epilation head for underarm/bikini-line. Before bikini-line hair removal, put on your swimwear or underwear and check the areas you wish to epilate.
- Using the epilator on non-recommended areas may cause pain or skin trouble.

Areas not suitable for epilation (Fig. 9)

Do not use the epilator on the inner side of the upper arms or areas which are prone to sagging such as elbows or knees.

<DRY epilation>

• DRY epilation is recommended. Before DRY epilation, wipe away moisture and sweat from the skin. Next, press the power switch.

<WET epilation>

- For WET epilation, always use only shower gel. Put the shower gel on the wet discs and turn on the switch to make lather. (Fig. 10)
Use on sufficiently wet skin. If you notice that some hair is not removed during epilation, try switching to DRY epilation.
- The pressure sensor works and the LED light may blink depending on the amount and type of shower gel used. Adjust the amount of shower gel or add water to the discs to dilute the foam.
- Foam forms, making the epilator slippery so you can move it quickly.
- The appliance may not operate at an ambient temperature lower than approximately 5 °C.
- Apply the epilator at a 90° angle and slide it slowly over your skin.

<Epilating legs or arms>



Attach the fast cap or gentle cap for legs/arms. (Fig. 11)
Slowly move against the flow of hair. (Fig. 12)

<Epilating underarms or bikini-line>



ES-EY90/EY80/EY70/EY31:
Attach the small epilation head.
ES-EY30: Attach the sensitive area cap to the epilation head. (Fig. 13)



Lightly apply the epilator at a 90° angle and ensure close contact with your skin.
Do not move the appliance back and forth while applied to the skin. Lift it away from the skin and change the direction, before moving it.
Stretch the skin with your fingers to prevent sagging, and slowly move the appliance against the grain of the hair. (Fig. 14)

<Usage frequency>

• Hair removal is not permanent, so it is recommended to epilate the underarms about once a week, and the bikini-line about once every two weeks.

<For beginners/those with sensitive skin>

- We also recommend to use SOFT mode. (➡ Page 15)
- Using the gentle cap for legs/arms with the skin guard is best for first time use or for those with sensitive skin.
The gentle cap for legs/arms has a skin protector for gentle hair removal by holding the skin down to reduce pain.

<Tips for best results>

- Massaging with a body puff may help prevent ingrown hairs.
- Reddening may occur after use. A cool towel is helpful in case of pain or a rash.
- If your skin is dry, apply moisturizer two days after use.
- Make sure skin is clean before and after use.

<Best hair length for epilation>

- Trim your hair before first time use or if you have not removed hair for a long time. Hair removal is easier and less painful when the hair is short.

Shaver head ES-EY90

<DRY shaving>

DRY shaving is recommended. Before DRY shaving, wipe away moisture and sweat from the skin.

<WET shaving>

Wet the skin and apply shower gel to the skin. Always use only shower gel.

1 Attach the shaver head [G].

- Confirm the bikini comb [F] is detached.

2 Select the mode by pressing the power switch [O19].

Foot care head **ES-EY90/EY80/EY70**

- It is recommended to use the product within 30 minutes after bathing or showering.
Wipe off any water from clean feet.
- Use within 5 minutes on each foot.

1 Attach the foot care head [●].

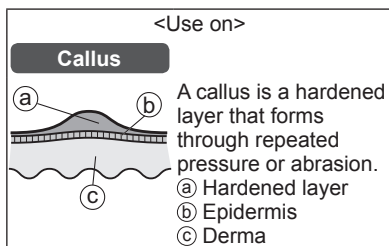
- Push down firmly until it clicks.

2 Select the mode by pressing the power switch [●].

- POWER mode is recommended.
(➡ Page 15)

Foot care basics

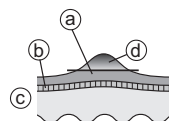
Use the product only for filing calluses and hardened skin on the feet. (Fig. 15)



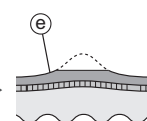
Precautions when filing

- Filing too large an area can result in larger calluses forming, so be sure to leave some of the hardened layer.

Before use



After use



(a) Hardened layer

(b) Epidermis

(c) Derma

(d) Portion to be removed

(e) Leave some of the hardened layer

- Filing a single location for a long time can cause heat due to friction. To avoid this, be sure to make small changes in the filing position while filing.
- Filing an area too deeply can cause it to become sore or inflamed.
- File about once every two weeks.

Tips for moving the foot care head

Move in the direction indicated by the arrows.

Use your free hand for support. (Fig. 16)

Scrub brush **ES-EY90/EY80**

- Best if used once per week.
- Best if used on areas needing epilation about 2 days before hair removal. Exfoliation may help prevent ingrown hairs.

1 Attach the brush head.

- Push down firmly until it clicks.

2 Wet the scrub brush. (Fig. 17)

3 Apply shower gel to your skin.

4 Select the mode by pressing the power switch [●].

- Best if used on legs, arms (especially elbows and knees) and neckline. Do not use on sensitive areas, face or throat.
- Do not hold in one place. Slide over skin in a circular pattern. (Fig. 18)
- Apply to the same area of skin for about 30 seconds each time, check your skin and adjust usage accordingly.

Cleaning

- Always clean the heads and caps after use.
- Switch off and unplug the appliance before cleaning.
- Take care not to damage the skin protector, frame, or caps for legs/arms and for underarms/bikini-line during cleaning.

Dry cleaning

Epilation head / Shaver head **ES-EY90**

1. Lift the caps and frame upward while holding the edge of the cap **[A B C]**/the frame release ribs **[E 4]** or remove the frame by pushing the frame release button **[C 12]**. (Fig. 19)
2. Clean the caps **[A B C]**, epilation head **[D]**, small epilation head for underarms/bikini-line **[E]** and shaver head **[C]** with the cleaning brush **[N]**. (Fig. 20)

Wet cleaning

Epilation head / Shaver head **ES-EY90**

(Fig. 21)

1. Wet the discs and blades, and then apply liquid hand soap.
2. Turn the switch on to create foam.
3. Rinse away all pieces of hair and dirt.
 - Do not use hot water.
 - Remove the frame before rinsing the shaver head.
4. Turn the switch off, wipe the appliance with a dry cloth and dry it well.

Foot care head **ES-EY90/EY80/EY70**

(Fig. 22)

1. Apply liquid hand soap to the centre of the file.
2. Pour a small amount of water on the file and turn on the power.
3. Thoroughly rinse away any debris.
4. Turn off the power, remove the frame, and rinse inside.
5. Wipe dry and air dry in a well-ventilated location.

Scrub brush **ES-EY90/EY80** / Brush head **ES-EY90/EY80**

(Fig. 23)

1. Turn on the power and thoroughly rinse debris from the scrub brush.
2. Turn off the power, remove the brush head, and thoroughly rinse the underside of the brush head.
3. Wipe the appliance with a dry cloth and dry it well.
 - To prevent brush deformation, dry it facing upward, and then store it.

Replacing the outer foil and the inner blade ES-EY90

It is best to replace the outer foil **[C7]** every year, and the inner blade **[C11]** every two years. Only remove the shaver head **[C]** outer foil when replacing it.

Replacing the outer foil (Fig. 24)

1. Gently push the outer foil, and use a fingernail to release the plastic panel **(b)** on the blade from the hooks **(a)** on the inside of the frame.
2. Bend the new outer foil slightly and push it in until it is hooked in the frame.



Replacing the inner blade (Fig. 25)

1. Remove the inner blade by holding it at both ends and pulling it straight away from the shaver.
2. Insert the inner blade by holding it at both ends and pressing downward.

Replacing the file ES-EY90/EY80/EY70

The file lifetime is about 1 year (assuming a single use of about 10 minutes every 2 weeks). It is best to replace the file about once a year.

(Fig. 26)

1. Press down to release the file.
2. Align the  shaped part with the  mark side and press down.

Replacing the scrub brush ES-EY90/EY80

Scrub brush	once a year (assuming 3 minutes of use per week)
-------------	---

- See page 15 for details regarding brush replacement.

Troubleshooting

Problem		Possible cause	Action
The appliance does not operate.		▶ It is not charged.	▶ Fully charge the appliance.
		▶ The switch is turned ON with the adaptor connected to the household outlet.	▶ Charging is only possible when connected to the household outlet. ▶ Disconnect from the household outlet before use.
	When epilating	▶ The skin protector or discs are deformed, cracked, or damaged.	▶ Request repair at an authorized service centre.
	When epilating or shaving	▶ Hair dust has accumulated.	▶ Clean the hair dust.
		▶ Shower gel has adhered to the discs and blade.	▶ Wash it off by soaking in warm water.
	When caring for feet	▶ The frame is not securely attached.	▶ Reattach it.
When exfoliating	▶ Shower gel has adhered to the scrub brush or brush head.	▶ Rinse in warm water. If shower gel does not rinse away, remove the scrub brush or brush head and soak in warm water.	
The usage time gets short.	▶ The appliance is used with approximately 5 °C or lower.	▶ Use the appliance in an ambient temperature approximately 5 °C or higher.	
	▶ The appliance is pressed against skin too hard.	▶ Contact the skin with gentle force.	
	▶ Not charged fully.	▶ Fully charge the appliance.	
The appliance stops during operation.	▶ The appliance is pressed against skin too hard.	▶ Contact the skin with gentle force.	
	▶ Not charged fully.	▶ Fully charge the appliance.	

Problem		Possible cause	Action
Cannot remove hair.	When epilating	▶ The appliance is used on long hair.	▶ Use on hair approximately 2 to 3 mm long.
The hair becomes stubble.		▶ The epilating head surface is not in close enough contact with the skin.	▶ Make the epilating head in closer contact with the skin and move.
		▶ The appliance is not moved against the flow of hair.	▶ Move the appliance against the flow of hair. (Refer to page 16.)
The appliance is not removing the hair as well as before.		▶ The appliance is moved too fast.	▶ Move it slowly. (Approximately 3~5 cm/sec) (Refer to page 16.)
		▶ Hair dust has accumulated.	▶ Clean the hair dust.
Sensitive area cap comes off during operation.		▶ The skin protector or discs are deformed, cracked, or damaged.	▶ Request repair at an authorized service centre.
	▶ The appliance is being pressed too hard against the skin.	▶ Contact the skin with gentle force.	
The appliance is not cutting as well as before.	When shaving	▶ The appliance is not applied at a 90° angle to your skin.	▶ Apply at a 90° angle to your skin. (Refer to page 16.)
		▶ Hair dust has accumulated.	▶ Clean the hair dust.
		▶ The blade is deformed.	▶ Replace the blade. Guidelines for replacement: Outer foil: Approximately 1 year Inner blade: Approximately 2 years
Cannot file.	When caring for feet	▶ The blade is worn out.	▶ Replace the file. Guidelines for replacement: Approximately 1 year
		▶ The file is worn out.	▶ Replace the file. Guidelines for replacement: Approximately 1 year
Cannot get rid of odor.		▶ The appliance is used in the SOFT mode.	▶ Try using it in POWER mode.
	▶ It is dirty.	▶ Soak the file in water for approximately 24 hours before washing.	

GB

D

F

I

NL

E

DK

P

N

S

FIN

PL

CZ

SK

H

RO

TR

Problem		Possible cause	Action
Does not remove cuticles or dirt sufficiently.	When exfoliating	▶ Not applying enough pressure to the skin or for a long enough time.	▶ Adjust degree of pressure and/or amount of time while monitoring the condition of your skin.
		▶ Brush deterioration from continuous use	▶ Replace the brush. Guidelines for replacement: Scrub brush: once a year

If the problems still cannot be solved, contact the store where you purchased the appliance or a service centre authorized by Panasonic for repair.

Battery life

Approximately 3 years.

If the operating time is significantly shorter even after a full charge, the battery has reached the end of its life.

(The battery life may change due to usage and storage conditions.)

The battery in this appliance is not intended to be replaced by consumers. Have the battery replaced by an authorized service centre.

Disposal of the appliance (Fig. 27)

Remove the built-in rechargeable battery before disposing of the appliance.

- The battery is to be disposed of safely.
- This figure must only be used when disposing of the appliance and must not be used to repair it. If you dismantle the appliance yourself, it will no longer be waterproof, which may cause it to malfunction.

How to remove the battery

- Remove the appliance from the AC adaptor.
- Press the power switch to turn on the power and then keep the power on until the battery is completely discharged.
- Remove the parts in steps ① to ④, and in step ⑤ push the pins in the socket with a screwdriver, etc. Then lift the battery and remove it.
- Take care not to short circuit the positive and negative terminals of the removed battery, and insulate the terminals by applying tape to them.

For environmental protection and recycling of materials

This appliance contains a Li-ion battery. Please make sure that the battery is disposed of at an officially assigned location, if there is one in your country.

Guarantee

Please visit Panasonic web site <https://www.panasonic.com> or contact an authorized service centre (You find its contact address in the pan european guarantee leaflet.) if you need information or if the epilator or the cord get damaged.

Specifications

Power supply	See the name plate on the AC adaptor. (Automatic voltage conversion)
Charging time	Approx. 1 hour
Airborne Acoustical Noise	Epilation head: 76 (dB (A) re 1 pW) Small epilation head for underarms/bikini-line: 67 (dB (A) re 1 pW) Shaver head: 64 (dB (A) re 1 pW) Foot care head: 69 (dB (A) re 1 pW) Brush head: 65 (dB (A) re 1 pW)

This product is intended for household use only.

- For more information about the energy efficiency of the product, please visit our website, www.panasonic.com, and enter the model number in the search box.

Disposal of Old Equipment and Batteries

Only for European Union and countries with recycling systems



These symbols on the products, packaging, and/or accompanying documents mean that used electrical and electronic products and batteries must not be mixed with general household waste.

For proper treatment, recovery and recycling of old products and used batteries, please take them to applicable collection points in accordance with your national legislation.

By disposing of them correctly, you will help to save valuable resources and prevent any potential negative effects on human health and the environment.

For more information about collection and recycling, please contact your local authority.

Penalties may be applicable for incorrect disposal of this waste, in accordance with national legislation.



Note for the battery symbol (bottom symbol)

This symbol might be used in combination with a chemical symbol. In this case it complies with the requirement set by the Directive for the chemical involved.

Importer:

Panasonic Marketing Europe GmbH

Authorized Representative in EU:

Panasonic Testing Centre

Winsbergring 15, 22525 Hamburg, Germany

Manufactured by:

Panasonic Corporation

1006, Oaza Kadoma, Kadoma City, Osaka, Japan

Panasonic Corporation
<https://www.panasonic.com>
© Panasonic Corporation 2022

© EN, DE, FR, IT, NL, SP, DA, PT, NB,
SV, FI, PL, CS, SK, HU, RO, TR

Printed in China
ES970WEY901503 S0922-0