

xiaomi Smart Camera C302 User Manual



Precautions

- The operating temperature range for this camera is -10°C to 40°C. Do not use this camera in environments with temperatures above or below the specified operating range.
- This camera is a precision electronic product. To ensure normal use, do not use the camera in extremely humid environments or locations that may cause water ingress.
- To improve the camera's performance, do not place it where its lens faces or is next to a reflective surface, such as glass windows or white walls, as this will cause the image to appear overly bright in areas close to the camera and darker in areas further away, or cause the camera to produce white images.
- When using Wi-Fi, make sure the camera is installed in an area with a strong Wi-Fi signal. Do not install the camera near microwave ovens and other objects or places that may affect its Wi-Fi signal.
- When enabling or disabling the night vision of the camera, the infrared cut-off filter will be switched and a slight clicking sound will be made, which is normal.
- If the power cable gets damaged, please contact the after-sales service team for replacement.
- When charging, use the charging cable included in the package. When charging with a power adapter, use only a qualified power adapter (with an output of 5 V $\overline{\text{---}}$ 1 A) that meets safety standards. Charging should be carried out indoors in a well-ventilated environment.
- The power adapter needs to be purchased separately.

Read this manual carefully before use, and retain it for future reference.

Product Overview

Package Contents



Xiaomi Smart Camera C302



Mounting
Template Sticker



Screws and Base
(including screw $\times 2$,
wall plug $\times 2$)



Charging Cable



Image Guide



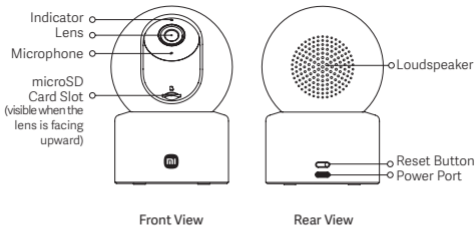
User Manual



Warranty Notice

Note:

Illustrations of product, accessories, and user interface in the user manual are for reference purposes only. Actual product and functions may vary due to product enhancements.



Notes:

The camera supports the physical lens blocking feature to enhance privacy protection.

The product's nameplate information is on the bottom and side of the product.

How to Use

- **Installing a microSD Card**

Make sure that the camera is already disconnected from the power supply.

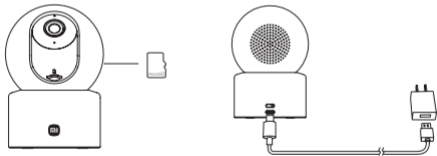
Adjust its lens upward until the microSD card slot is revealed, then insert the microSD card into the slot (the side with contact points must be facing down).

CAUTION:

Unplug the camera when inserting or removing the microSD card. Please use a microSD card from a qualified brand (the camera supports a microSD card with a maximum capacity of 256 GB and the FAT32 format only, and the microSD card may need to be formatted to the FAT32 format before use via Settings > Manage storage on the camera's plug-in page in the Xiaomi Home app). It is recommended that the microSD card should have a read/write speed of no less than U1/Class 10.

• Turning on

Plug the power adapter cable into the power port on the camera, and the camera will automatically turn on.



When the indicator keeps orange and a voice notification is heard, the camera is successfully turned on.

Note: When the camera is working, do not turn its lens nor force it to rotate. If the positioning of the lens is inaccurate, please calibrate it in the Xiaomi Home app. (Please use a compatible and qualified adapter with an output of 5V --- 1A to power the product.)

Indicator Status

Keeping orange: Awaiting connection/Reset successfully

Blinking orange: Connecting to a network...

Blinking blue: Connecting to a server/OTA update in progress...

Keeping blue: Connected successfully/Working normally

Connecting with the Xiaomi Home App

This product works with the Xiaomi Home app.

Use the Xiaomi Home app to control your device, and to interact with other smart home devices.



92B93C2F

Scan the QR code to download and install the app. You will be directed to the connection setup page if the app is installed already. Or search for "Xiaomi Home" in the app store to download and install it.

Open the Xiaomi Home app, tap "+" on the upper right, and then follow the instructions to add your device.

Notes:

The version of the app might have been updated, please follow the instructions based on the current app version.

When connecting, make sure the network connection is stable, the camera is turned on, and the indicator remains orange. Once connected, the indicator will change to blue.

- **Reset**

Press and hold the reset button for about 7 seconds if changing the network or the Xiaomi Account connected to the camera. A voice notification will be heard once the reset is completed.

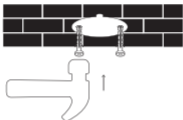
Note: Resetting the camera will not delete any data on the microSD card.

Installation

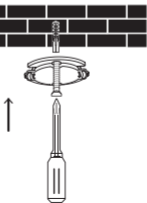
You can place the camera on a horizontal surface, such as a desk, dining table, or coffee table, or mount it on a wall.

Mounting the camera on a wall:

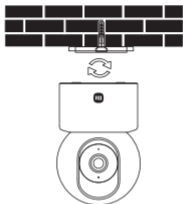
1. Stick the mounting template sticker in a proper position on the wall. Drill holes in the wall that align with the holes on the sticker, with a diameter of about 6 mm and a depth of about 30 mm.
2. Insert the plastic wall plugs into the drilled holes.



3. Place the side of the base with arrows facing forward, and then align the holes. Insert the screws and then tighten them into the wall plugs with a Phillips head screwdriver.



4. Align the grooves on the bottom of the camera with the raised part on the base, and then turn the camera clockwise until it locks into place.



- ⚠️ Caution:**
The wall must be able to support at least three times the total weight of the camera.
- ⚠️ WARNING:**
The camera must be securely fixed to the ceiling or wall according to the installation instructions to prevent possible injury.

WEEE Information



All products bearing this symbol are waste electrical and electronic equipment (WEEE as in Directive 2012/19/EU) which should not be mixed with unsorted household waste. Instead, you should protect human health and the environment by handing over your waste equipment to a designated collection point for the recycling of waste electrical and electronic equipment, appointed by the government or local authorities. Correct disposal and recycling will help prevent potential negative consequences to the environment and human health. Please contact the installer or local authorities for more information about the location as well as terms and conditions of such collection points.

EU Declaration of Conformity



Hereby, Xiaomi Communications Co., Ltd. declares that the radio equipment type Xiaomi Smart Camera C302 (product name) MBC28 (model) is in compliance with Directive 2014/53/EU. The full text of the EU declaration of conformity is available at the following internet address:

<https://www.mi.com/global/support/terms/declaration>

For detailed e-manual, please go to

<https://www.mi.com/global/support/user-guide>

Under normal use conditions, this equipment should be kept a separation distance of at least 20 cm between the antenna and the body of the user.



CAUTION: Possibly hazardous optical radiation emitted from this product. Do not stare at operating lamp. May be harmful to the eyes.

Specifications

Name: Smart Camera

Item Dimensions: 78 × 76 × 115 mm

Operating Temperature: -10°C to 40°C

Wi-Fi Operation Frequency: 2400–2483.5 MHz

Wi-Fi Maximum Output Power: 20 dBm

Bluetooth Operation Frequency: 2400–2483.5MHz

Bluetooth Maximum Output Power: 20 dBm

Compatible with: Android™ 8 & iOS 14.0 or above

Wireless Connectivity: Wi-Fi IEEE 802.11 b/g/n/ax 2.4 GHz, Bluetooth 5.0

Storage: microSD card (8 GB–256 GB supported)/Cloud storage

* The cloud storage function is not available in the Sultanate of Oman.

Model: MBC28

Rated Input: 5V $\overline{\text{---}}$ 1A

Net Weight: 215 g

Resolution: 2304 × 1296

Video Codec: H.265

The product is in compliance with UK PSTI regulations, the full text of declaration of conformity is available at the following internet address:
<https://www.mi.com/global/support/terms/declaration>

Importer:

Beryko s.r.o.

Pod Vinicemi 931/2, 301 00 Plzeň

www.beryko.cz

Manufacturer: Xiaomi Communications Co., Ltd.

Address: #019, 9th Floor, Building 6, 33 Xi'erqi Middle Road, Haidian District, Beijing, 100085, China

For more information, visit www.mi.com

User manual version: V1.0EU

REP.

Xiaomi Technology Netherlands B.V. Prinses Beatrixlaan 582, 2595BM, The Hague, The Netherlands contact@support.mi.com