

xiaomi Multifunctional Rice Cooker 4L User Manual



Read this manual carefully before use, and retain it for future reference.

The rice cooker is for household use only.

Precautions

Usage restrictions

- Keep the rice cooker away from children.
- The normal operating altitude range of the rice cooker is 0–2000 meters.
- Do not place the rice cooker on unstable or wet surfaces. Keep it away from fire or heat sources (such as stoves), preferably 30 cm or more.
- Do not place the rice cooker near devices that are susceptible to electromagnetic interference.
- Do not use a non-dedicated or deformed inner pot to prevent burns and injuries as a result of overheating.

Cleaning & maintenance

- Do not immerse the rice cooker in water or splash it with water.
- Do not use steel wool or other hard objects to clean or scrub the inner pot.
- Use only soft cloths for cleaning.

AC Power Cord

- Use only the supplied AC power cord.
- Unplug the power cord before repairing and moving the rice cooker.
- If the supply cord is damaged, it must be replaced by a special cord or assembly available from the manufacturer or its service agent.
- Do not bend, pull or twist the power cord, otherwise its core may be exposed or may break.
- Do not use the supplied power cord with any other device.

Precautions for using power supply

- Do not use any power supply other than 220–240 V AC to avoid fire and electrical shocks.
- Always unplug the rice cooker by holding the power plug. Do not pull the AC power cord to avoid electric shocks or short circuit fire.
- Do not allow children to use the rice cooker unsupervised, and keep it out of the reach of infants to prevent electric shock, burns, or other injuries.

- Do not plug or unplug the power cord with wet hands, so as to avoid electric shock or injuries.

About the environment

- Steam and heat may damage, discolor or deform your walls and furniture, so keep the product preferably at least 30 cm away from any walls and furniture.
- When using the rice cooker in a kitchen cabinet, etc., please ensure that the place is well ventilated.

While in use

- Do not use the inner pot on any other heat sources, such as an induction rice cooker or gas stove.
- Do not place the inner pot and accessories in the dishwasher for cleaning.
- Do not insert anything into the steam outlet or gaps to avoid electric shocks or injuries.
- Do not touch the inner pot directly by hand during and immediately after use to avoid high-temperature burns.
- Do not touch the steam outlet during or immediately after use. Keep away from children and infants and take special precautions to prevent them from being scalded.
- Do not move or shake the rice cooker during use.
- Do not use this rice cooker to prepare food that may clog the steam valve (such as seaweed and kelp).
- Do not cover the steam valve of the rice cooker with other items when in use to avoid the inability of steam release.
- If rice is left in the rice cooker in the keep warm mode for more than 12 hours, it will have a peculiar smell.
- This appliance is not intended for use by persons (including children) with reduced physical, sensory or mental capabilities, or lack of experience and knowledge, unless they have been given supervision or instruction concerning use of the appliance by a person responsible for their safety for IEC60335.
- Children should be supervised to ensure that they do not play with the appliance for IEC60335.

- This appliance can be used by children aged from 8 years and above if they have been given supervision or instruction concerning use of the appliance in a safe way and if they understand the hazards involved. Cleaning and user maintenance shall not be made by children unless they are older than 8 and supervised. Keep the appliance and its cord out of reach of children aged less than 8 years for EN 60335.
- Appliances can be used by persons with reduced physical sensory or mental capabilities of lack of experience and knowledge if they have been given supervision or instruction concerning use of the appliance in a safe way and understand the hazards involved for EN 60335.
- Children shall not play with the appliance for EN 60335.

After use

- After use, always remember to turn off the rice cooker and unplug the power cord.
- Regularly check the steam outlet to make sure it is not clogged.
- Immediately stop using and unplug this product if there is any error or it malfunctions. Remove the inner pot only when it has cooled off.

Additional precautions

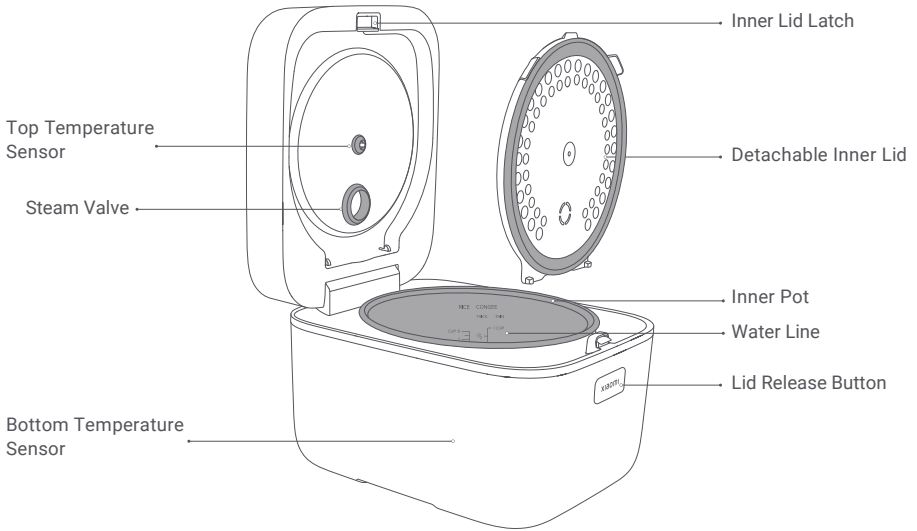
- Do not drop the rice cooker or hit it with hard objects to prevent injuries or malfunction.
- Do not use the rice cooker when the inner set is damaged to avoid scalds or injuries caused by steam or boiling object leaks.
- Do not modify the unit.
- Only a repair technician may disassemble or repair the product, in order to prevent the risk of fire, electric shocks, and injuries.
- Immediately stop using this product if there is any error or malfunctions to prevent fire, electric shocks or other injuries.
- Avoid the silicone parts of the product getting contact with alcoholic beverages with an alcohol content greater than 50%.

CAUTION: The surface of the heating elements will have residual heat after use.

CAUTION: Incorrect usage of the rice cooker may result in injuries.

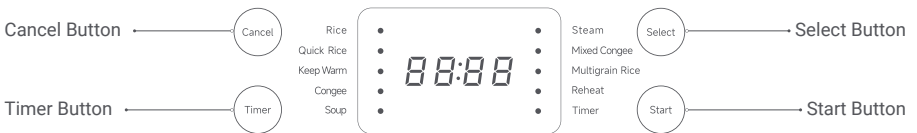
CAUTION: Do not splash liquid onto the connector.

Product Overview



Illustrations of product, accessories, and user interface in the user manual are for reference purposes only. Actual product and functions may vary due to product enhancements.

Control Panel



1. The scheduling indicator blinks, indicating that the rice cooker is in timer setting status. Press the timer button to adjust your desired schedule time.
2. The scheduling indicator keeps on, indicating that the rice cooker is in timer countdown mode. Cooking completes after the countdown ends.

Note: The timer countdown counts the cooking completion time instead of the cooking start time.

Accessories



NOTE Before using the rice cooker for the first time, run the rice mode with water for 2 or 3 cycles to effectively eliminate any unpleasant odors.

How to Use

Before using the rice cooker, plug the power cord into the power port in the lower portion of the rice cooker, and plug the other end into an AC outlet.

Start cooking

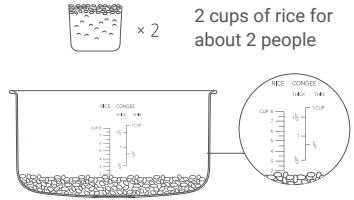
1. Open the lid

Press the lid release button to open the upper lid.

Note: When you need to remove the inner pot, gently push back the upper lid to fully open it. Avoid contacting with the inner lid when removing the inner pot.

2. Add rice and water

Using 2 cups of northeastern rice as an example, add 2 measuring cups of rice into the pot, then add water up to number 2 of the water line for rice. When adding water, do not exceed the water line for the corresponding number of cups of rice to prevent the rice cooker from overflowing or a possible short circuit.



3. Setting menu

After the rice cooker is connected to power, press the select button to select one from rice, quick rice, keep warm, congee, soup, steam, mixed congee, multigrain rice, and reheat modes.

4. Start cooking

Press the start button to start the cooking mode.

WARNING: The rice mode and the quick rice mode are for rice cooking only. Do not cook other foods in these two modes. Otherwise, it may result in scalds and damage to the product performance.

5. Cancel

Press the cancel button to cancel cooking or scheduling in the cooking mode.

6. Schedule

After selecting a cooking mode (e.g. rice), press the timer button to set the time needed from the present to the completion of cooking.

For example, if you intend to enjoy your meal in 10 hours, set the timer to show as 10:00.

Note: The desired completion time needs to be later than the current time plus the cooking time, otherwise cooking will start immediately.

7. Off mode

After the rice cooker is connected to power, the display will show "----" if no action is taken within 5 minutes. The screen will turn off after another 5 minutes, indicating that the rice cooker is in off mode.

Simply press any button to wake up the rice cooker.

Menu

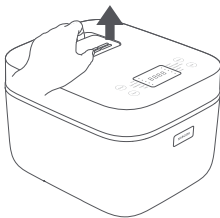
Press the select button to navigate to a desired cooking mode. Each time you press the select button, the cooking mode will be switched in sequence of rice, quick rice, keep warm, congee, soup, steam, mixed congee, multigrain rice, and reheat.

Menu	Working time
Rice	1 h
Quick rice	30 min
Keep warm	12 h
Congee	1.5 h
Soup	1.5 h

Menu	Working time
Steam	30 min
Mixed congee	3 h
Multigrain rice	1.5 h
Reheat	30 min

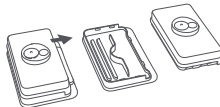
Care & Maintenance

1. Disassembling

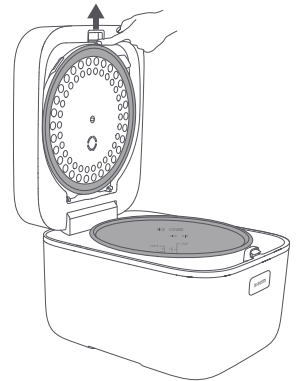


a. Gently dig out the steam valve and remove it.

Note: Clean the inner lid and steam valve after every use.

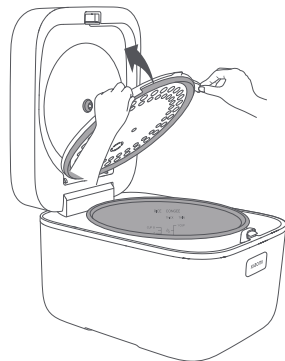
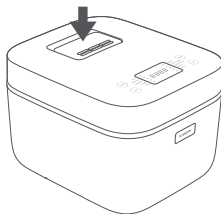
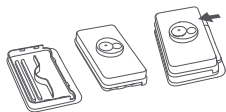


b. Gently push out the inner cover of the steam valve (as shown in the figure), and remove it.



c. Hold the inner lid with both hands and pull it outwards, then remove it.

2. Assembling



a. Align and push the inner cover onto the steam valve to assemble it.

b. Align the steam hole on the steam valve with the steam outlet and install the steam valve.

Note: The steam valve must be installed correctly, otherwise it may cause scalds or impair the product performance.

c. Align the inner lid to the latch and gently push the inner lid into it. When you hear a click sound, the buckle is locked firmly.

Note: The inner lid must be installed, otherwise the upper lid of the rice cooker cannot be closed.

Specifications

Name: Rice Cooker	Model: MFB090-1
Rated Voltage: 220–240 V~	Rated Frequency: 50–60 Hz
Rated Power: 785–935 W	Material of Inner Pot: Aluminum alloy
Rated Capacity of Rice: 1.28 L	Rated Capacity of Water: 4 L
Item Dimensions: 262 × 312 × 212 mm	Off Mode: 0.4 W

Error Codes

Code	Error Description	Notes
E-09	The top sensor is damaged.	Contact after-sales service.
E-10	The bottom sensor is damaged.	Contact after-sales service.

Troubleshooting

Issues	Possible causes	Solutions
Unable to close the upper lid.	Check whether the inner lid is properly installed.	Install the inner lid correctly.
Rice is half-cooked (undercooked).	The ratio of rice and water may be not as required (less water). Rice may be not taken in a flat cup (excessive rice).	Follow the operating instructions given in the user manual.
Overflows while cooking rice or congee.	Misapply the cooking mode when cooking congee. Rice and water are not added in proportion (excessive water). There are foreign objects at the outer bottom of the inner pot.	Follow the operating instructions given in the user manual. Remove foreign objects.
There is an odor during cooking process.	There is residual food or accumulated water on the steam valve or inner lid.	At first use, using the steam mode to boil water for 30 minutes 2-3 times can effectively remove peculiar smells. Clean the steam valve or inner lid. Follow the instructions to boil water.
The rice on the bottom is scorched.	The rice has not been cleaned thoroughly. There are foreign objects at the outer bottom of the inner pot.	Clean the rice thoroughly. Remove foreign objects.
The rice dries out or gives off a peculiar smell in the keep warm mode.	The keep-warm time exceeds 12 hours. There are foreign objects at the outer bottom of the inner pot.	The keep-warm time should not exceed 12 hours. Remove foreign objects.

Note: If the above problems cannot be solved, please contact the after-sales service team.

CE Hereby, Chunmi Technology (Shanghai) Co., Ltd. declares that this equipment type Rice Cooker MFB090-1 is in compliance with the applicable Directives and European Norms, and amendments. The full text of the EU declaration of conformity is available at the following internet address: <http://www.mi.com/global/service/support/declaration.html>
For detailed e-manual, please go to www.mi.com/global/support/user-guide



All products bearing this symbol are waste electrical and electronic equipment (WEEE as in directive 2012/19/EU) which should not be mixed with unsorted household waste. Instead, you should protect human health and the environment by handing over your waste equipment to a designated collection point for the recycling of waste electrical and electronic equipment, appointed by the government or local authorities. Correct disposal and recycling will help prevent potential negative consequences to the environment and human health. Please contact the installer or local authorities for more information about the location as well as terms and conditions of such collection points.

Importer:
Beryko s.r.o.
Pod Vinicemi 931/2, 301 00 Plzeň
www.beryko.cz

Manufactured for: Xiaomi Communications Co., Ltd.
Manufactured by: Chunmi Technology (Shanghai) Co., Ltd.
(a Mi Ecosystem company)
Address: Building 11, 1333 Jiangnan Avenue, Changxing Science and Technology Park, Lingang, Shanghai, China

Made in China

For further information, please go to www.mi.com

User Manual Version: V1.0

