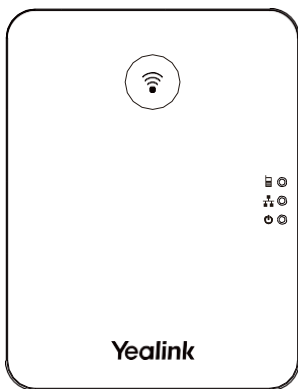


# Yealink

## DECT IP Базовая станция W70B



Краткое руководство (V1.0)

## Комплектация



Базовая станция



Адаптер Питания



Подставка



Ethernet Кабель



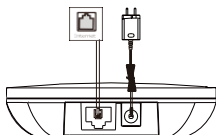
Краткое руководство

**Примечание:** Мы рекомендуем использовать аксессуары, произведенные Yealink. Аксессуары других производителей могут работать с телефоном некорректно.

## Подготовка к эксплуатации

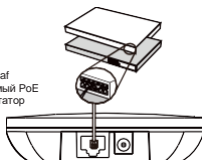
### 1. Подключите питание базовой станции к сети используя метод а или б

#### а. Блок питания



#### б. PoE (Power over Ethernet)

IEEE 802.3af  
Совместимый PoE  
хаб/коммутатор

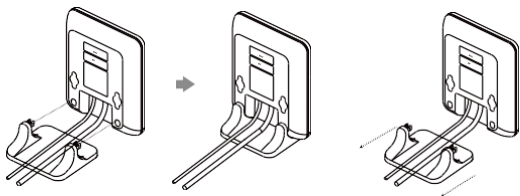


### Примечание:

- Если вы выбрали метод а, используйте блок питания Yealink (5V/0.6A). Сторонний блок питания может повредить базовую станцию.
- Если вы выбрали метод б, вам не потребуется подключать блок питания. Убедитесь в совместимости PoE-коммутатора.

## 2а. (Настольное использование) Использование подставки

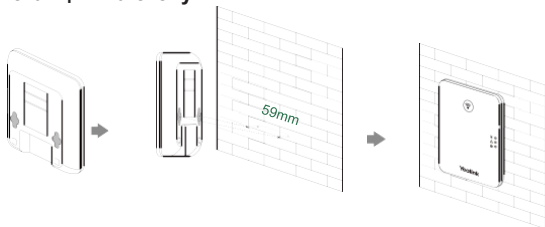
Закрепление устройства на подставке      Удаление подставки



Совместите защелки с соответствующими отверстиями и протолкните вперед, вставив их в отверстия.

Вытащите защелки из отверстий по горизонтали.

## 2b. (Настенное использование) Установка базовой станции на стену



#### Regulatory Notices

- Operating Ambient Temperatures**
- Operating temperature: +32 to 104°F (0 to 40°C)
  - Relative humidity: 5% to 90%, noncondensing
  - Storage temperature: -22 to +158°F (-30 to +70°C)

#### Warranty

Our product warranty is limited only to the unit itself, when used normally in accordance with the operating instructions and the system environment. We are not liable for damage or loss resulting from the use of this product, or for any claim from a third party. We are not liable for problems with Yealink device arising from the use of this product, we are not liable for financial damage, lost profits, claims from third parties, etc., arising from the use of this product.

#### Explanation of the symbols

- DC symbol
- the DC voltage symbol.
- WEEE (Warning symbol)

To avoid the potential effects on the environment and human health as a result of the presence

of hazardous substances in electrical and electronic equipment, and users of electrical and electronic equipment should understand the meaning of the crossed-out wheeled bin symbol.

Do not dispose of WEEE as unsorted municipal waste and have to collect such WEEE separately.

#### Restriction of Hazardous Substances Directive (RoHS)

The device complies with the requirements of the EU RoHS Directive. Statements of compliance can be obtained by contacting support@yealink.com.

#### Safety Instructions

Save these instructions. Read these safety instructions before use.

#### General Requirements

- Before you install and use the device, read the safety instructions carefully and observe the situation during operation.
- During the process of storage, transportation, and operation, please always keep the device dry and clean, avoid collision and crash.
- Please attempt not to dismantle the device by yourself. In case of any discrepancy, please contact the appointed maintenance center for repair.
- Please refer to the relevant laws and statutes while using the device. Legal rights of others should be respected as well.

#### Environmental Requirements

- Place the device at a well-ventilated area. Do not expose the device under direct sunlight. Keep the device dry and free of dust.
- Do not place the device on or near any inflammable or fire-vulnerable object, such as rubber, made materials.
- Keep the device away from any heat source or bare fire, such as a candle or an electric heater.

#### Operating Requirements

- Do not let a child operate the device without guidance.
- Do not let a child play with the device or any accessory in case of accidental swallowing.
- Please use the accessories provided or authorized by the manufacturer only.
- The power supply of the device shall meet the requirements of the input voltage of the device. Please use the provided surge protection power socket only.
- Before plugging or unplugging any cable, make sure that your hands are completely dry.
- Do not spill liquid of any kind on the product or use the equipment near water, for example, near a bathtub, washbowl, kitchen sink, wet basement or near a swimming pool.
- During a thunderstorm, stop using the device and disconnect it from the power supply. Unplug the power plug and the Agreement Digital Subscriber Line (ADSL) twisted pair (the antenna or frequency cable) to avoid lightning strike.
- If the device is left unused for a rather long time, disconnect it from the power supply and unplug the power plug.
- When there is smoke emitted from the device, or some abnormal noise or smell, disconnect the device from the power supply, and unplug the power plug immediately.
- Contact the specified maintenance center for repair.
- Do not insert any object into equipment enclosure, such as a part of the product or auxiliary product.
- Before connecting a cable, connect the grounding cable of the device first. Do not disconnect the grounding cable until you disconnect all other cables.

#### Battery Requirements

- Do not immerse the battery into water, which could short-circuit and damage the battery.
- Do not expose the battery to an open flame or leave the battery where it could be subjected to extremely high temperatures, which could cause the battery to explode.
- Do power the handset off before removing the battery.
- Do not try to use the battery for the power supply of any device other than this handset.
- Do not open or mutilate the battery, released electrolyte is corrosive and may cause damage to your eyes or skin.
- Use only the rechargeable battery pack delivered with the handset or those interchangeable battery packs expressly recommended by Yealink.
- Defective or exhausted battery should never be disposed of as municipal waste. Return old battery to the battery supplier, a licensed battery dealer or a designated collection facility.

#### Cleaning Requirements

- Before cleaning the device, disconnect it from the power supply.
- Use a piece of soft, dry and anti-static cloth to clean the device.
- Keep the power plug clean and dry.

#### Troubleshooting

This unit cannot supply power to Yealink device.

There is a bad connection with the plug.

Clean the plug with a dry cloth.

Connect it to another wall outlet.

The usage environment is out of operating temperature range.

1. Use in the operating temperature range.

The cable between the unit and the Yealink device is connected incorrectly.

1. Connect the cable correctly.

You cannot connect the cable properly.

1. You may have connected a wrong Yealink device.

2. Use the correct power supply.

Some dust, etc., may be in the port.

1. Clean the port.

Contact your dealer or authorized service facility for any further questions.

#### FCC Statement

This device complies with part 15 of the FCC Rules. Operation is subject to the following two conditions: (1) this device may not cause harmful interference, and (2) this device must accept any interference received, including interference that may cause undesired operation.

Any changes or modifications not expressly approved by the party responsible for compliance could void the user's authority to operate the equipment.

#### IC Statement

This device complies with Industry Canada's licence-exempt RSS. Operation is subject to the following two conditions:

(1) this device may not cause interference; and

(2) this device must accept any interference, including interference that may cause undesired operation of the device. (CAN ICES-3/B)

Le présent appareil est conforme aux CNR d'Industrie Canada applicables aux appareils radio exempts de licence. L'exploitation est autorisée aux deux conditions suivantes:

(1) l'appareil ne doit pas produire de brouillage;

(2) l'utilisateur de l'appareil doit accepter tout brouillage radioélectrique subi, même si le brouillage est susceptible d'en compromettre le fonctionnement. (NMB-3/B)

This equipment complies with FCC and IC radiation exposure limits set forth for an uncontrolled environment. This equipment should not be installed and operated with minimum distance 20 cm between the radiator and your body.

Cet équipement ne doit pas être installé et utilisé avec une distance

minimum de 20 centimètres entre le radiateur et votre corps.

Copyright Information

YEALINK NETWORK TECHNOLOGY CO., LTD.

309, 3rd Floor, No. 16, Yun Ding North Road, Huli District, Xiamen City, Fujian, P.R.C.

YEALINK (EUROPE) NETWORK TECHNOLOGY B.V.

Sirswimkylaan 3127, Atrium Building, 8th floor, 1077ZX Amsterdam, The Netherlands

YEALINK (USA) NETWORK TECHNOLOGY CO., LTD

999 Peachtree Street Suite 2300, Fulton, Atlanta, GA, 30309, USA

Made in China

## About Yealink

Yealink (Stock Code: 300628) is a global brand that specializes in video conferencing, voice communications and collaboration solutions with best-in-class quality, innovative technology and user-friendly experience. As one of the best providers in more than 140 countries and regions, Yealink ranks No. 1 in the global market share of SIP phone shipments (Global IP Desktop Phone Growth Excellence Leadership Award Report, Frost & Sullivan, 2019).

## Technical Support

Visit Yealink WIKI (<http://support.yealink.com/>) for firmware downloads, product documents, FAQ, and more. For better service, we sincerely recommend you to use Yealink Ticketing system (<https://ticket.yealink.com>) to submit all your technical issues.



430104001606



YEALINK(XIAMEN) NETWORK TECHNOLOGY CO., LTD.

Web: [www.yealink.com](http://www.yealink.com)

Copyright©2021 YEALINK(XIAMEN) NETWORK TECHNOLOGY CO., LTD. All rights reserved.