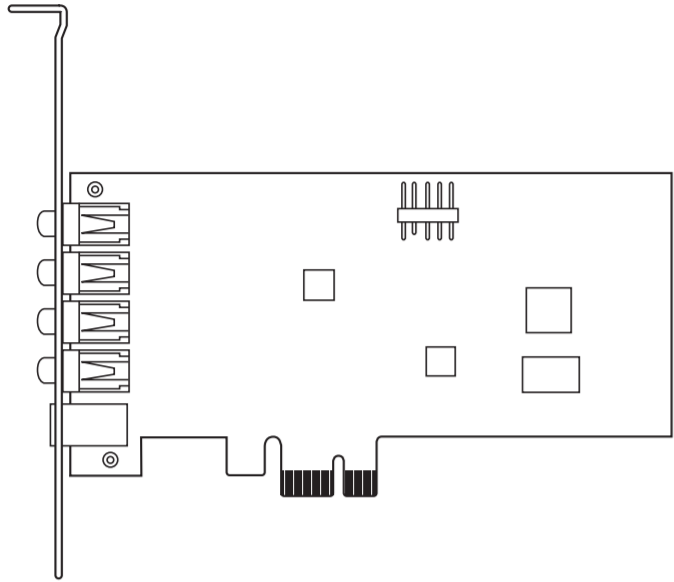




Xonar SE

PCIe 5.1 & Headphone Amp Audio Card



Quick Start Guide

Safety Information

- Before installing the device on a motherboard, carefully read all the manuals that came with the package.
- To prevent electrical shock hazard or short circuits, switch off the power supply before installing the device on a motherboard or connecting any single cables to the device.
- If the device is broken, do not try to fix it by yourself. Contact a qualified service technician or your retailer.
- Before using the product, make sure all cables are correctly connected. If you detect any damage, contact your dealer immediately.
- To avoid short circuits, keep paper clips, screws, and staples away from connectors, sockets and circuitry.
- Avoid dust, humidity, and temperature extremes. Do not place the product in any area where it may become wet.
- Place the product on a stable surface.
- If you encounter technical problems with the product, contact a qualified service technician or your retailer.



This symbol of the crossed out wheeled bin indicates that the product (electrical and electronic equipment) should not be placed in municipal waste. Check local regulations for disposal of electronic products.

Package Contents

This package should contain the following:

- ASUS Xonar SE PCIe audio card
- Low Profile Bracket x1
- Quick Start Guide x1

System Requirements

To ensure a successful installation of the the Xonar SE audio card, your computer must meet the following requirements:

- One PCIe 1.0 (or higher) compatible slot for the audio card
- Microsoft® Windows® 10/ 8.1 / 7 SP1 (32/64bit)
- Intel® Pentium® 4 1.4 GHz or AMD® Athlon 1400 CPU or faster CPU
- 1GB (or above) DRAM system memory
- 300 MB available HDD space for driver installation package
- High-quality headphones or powered analog speakers to enjoy the ultra-high fidelity sound of the card

Driver Installation

After installing the Xonar SE audio card into your computer, you need to install the device driver that enables the Xonar SE audio card to work with Windows operating system.

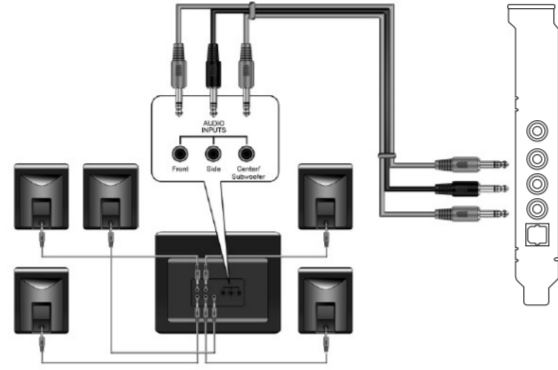
IMPORTANT: Ensure that you have installed the audio card driver before installing the Xonar SE driver. Otherwise, driver installation error may occur.

To install the device driver:

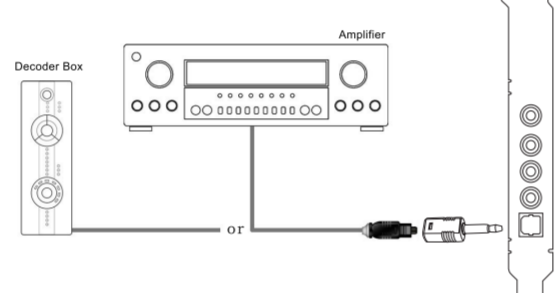
- After you have installed the Xonar SE card, turn on your computer. Windows® automatically detects the audio card and searches for device drivers. When prompted for the drivers, click **Cancel**.
- Go to ASUS official website www.asus.com to download and install the latest driver.
- Follow the onscreen instructions to finish the installation.

Functionality

5.1 channel speakers



Digital speakers S/PDIF Out

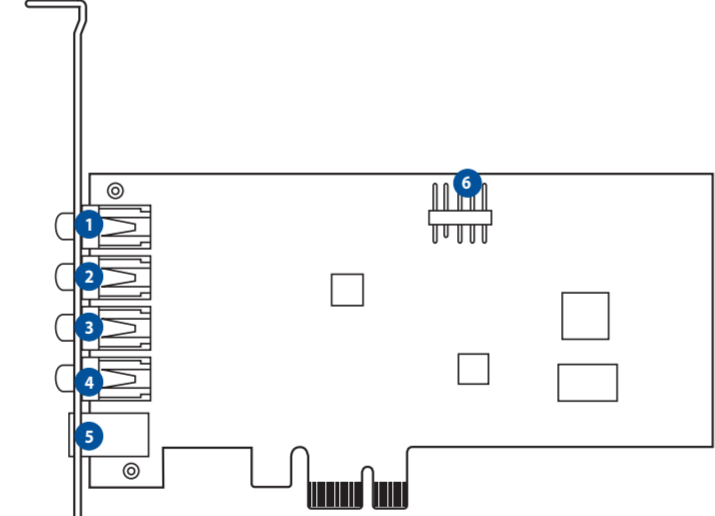


Microphone / headphone



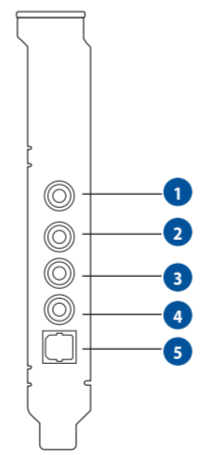
Hardware Features

Top view



Side view

Audio ports



No.	Item	No.	Item
1	Microphone In port	4	Center/Subwoofer Out port
2	Line In port	5	S/PDIF Out port
3	Headphone/Front Out port	6	Front panel audio header
4	Side Surround Out port		

Hardware Features

繁體中文

- 麥克風輸入連接埠
- 音效輸入連接埠
- 耳機 / 前側音效輸出連接埠
- 側邊環繞音效輸出連接埠
- 中央 / 重低音音效輸出連接埠
- S/PDIF 輸出連接埠
- 前面板音效插座

简体中文

- 麦克风输入接口
- 音效输入接口
- 耳机 / 前侧音效输出接口
- 侧边环绕音效输出接口
- 中央 / 重低音音效输出接口
- S/PDIF 输出接口
- 前面板音频插座

FRANÇAIS

- Port d'entrée pour microphone ; Port d'entrée audio
- Prise casque / sortie audio avant
- Port de sortie surround latérale
- Port de sortie pour haut-parleur central / caisson de basse
- Port de sortie S/PDIF
- Connecteur pour port audio en façade

DEUTSCH

- Mikrofoneingang; Line-In-Anschluss
- Kopfhörer-/Front-Ausgang
- Seiten-Surround-Ausgang
- Center-/Subwoofer-Ausgang
- S/PDIF-Ausgang
- Frontblenden-Audio-Header

ITALIANO

- Porta ingresso microfono
- Porta line in
- Porta uscita cuffie/altoparlanti frontali
- Porta uscita altoparlanti laterali surround
- Porta uscita altoparlante centrale/subwoofer
- Porta uscita S/PDIF
- Header per il pannello frontale

日本語

- マイク / ライン入力ポート
- ヘッドホン / フロント出力ポート
- サイドサラウンド出力ポート
- センター / サブウーファー出力ポート
- S/PDIF 出力ポート
- フロントパネル オーディオヘッダー

РУССКИЙ

- Разъем для микрофона; Аудиовход
- Выход для наушников/передних колонок
- Выход бокового канала
- Выход центрального канала/сабвуфера
- S/PDIF-выход
- Аудиоразъемы для передней панели

한국어

- 마이크 입력 포트 ; 라인 입력 포트
- 헤드폰 / 전면 출력 포트
- 측면 서라운드 출력 포트
- 중앙 / 서브우퍼 출력 포트
- S/PDIF 출력 포트
- 전면 패널 오디오 헤더

العربية

- منفذ إدخال الميكروفون
- منفذ الإدخال الصوتي
- منفذ سماعة الرأس الأمامي الخارجي
- منفذ خارجي جانبي
- منفذ خارجي أوسط/للمتصخم الفرعي
- منفذ S/PDIF خارجي
- أس صوت اللوحة الأمامية

MAGYAR

- Mikrofon-csatlakozó port;
- Vonzszintű bemeneti port
- Fejhallgató/Elő kimeneti port
- Oldalsó térfhangszóró-kimeneti port
- Középső/Mélyugárzó kimeneti port
- S/PDIF kimeneti port
- Előlapi hangcsatlakozó

БЪЛГАРСКИ

- Вход за микрофон; Line In порт
- Слушалки/Изход отпред
- Страничен изходен порт за съраунд звук
- Изходен порт център/събуфер
- S/PDIF изход
- Аудиоконектор на предния панел

HRVATSKI

- Ulazni priključak za mikrofon; Linijski ulazni priključak
- Priključak za slušalice/prednji izlaz
- Priključak bočnog izlaza prostornog zvuka
- Priključak izlaza srednjeg/bas zvučnika
- S/PDIF izlazni priključak
- Audio priključak na prednjoj ploči

ČEŠTINA

- Port vstupu mikrofonu; Port linkového vstupu
- Port výstupu pro sluchátka/přední reproduktory
- Port výstupu postranního prostorového zvuku
- Port výstupu středového reproduktoru/subwooferu
- Port výstupu S/PDIF
- Čelní panel zvuku

DANSK

- Mikrofonstik; Indgangsstik
- Hovedtelefonstik/Front-udgangsstik
- Side-surround-udgangsstik
- Midt/Subwoofer-udgangsstik
- S/PDIF-udgangsstik
- Lydstik på frontpanel

NEDERLANDS

- Microfooningang; Lijningang
- Hoofdtelefoon-/voor-uitgang
- Surround-uitgang zijkant
- Midden/subwooferuitgang
- S/PDIF-uitgang
- Audiokop voorpaneel

SUOMI

- Mikrofonin tuloportti; Linja sisään -portti
- Kuuloke-/Etulähtöportti
- Sivu-surround-lähtöportti
- Keski-/Subwoofer-lähtöportti
- S/PDIF-lähtöportti
- Eturaneelin audiopää

ΕΛΛΗΝΙΚΑ

- Θύρα εισόδου μικροφώνου; Θύρα γραμμής εισόδου
- Θύρα ακουστικών/μπροστινή έξοδος
- Θύρα πλευρικής εξόδου Surround
- Θύρα εξόδου κεντρικού/υποβούφερα ηχείου
- Θύρα εξόδου S/PDIF
- Θύρα ήχου μπροστινής πλευράς

Bahasa Indonesia

- Port Input Mikrofon;
- Port Saluran Musik
- Port Output Headphone/Depan
- Port Output Surround Samping
- Port Output Center/Subwoofer
- Port Output S/PDIF
- Header audio panel depan

NORSK

- Mikrofon-inngangsport; Linje inn-port
- Hodetelefon-/front-utgangsport
- Side-surround-utgangsport
- Senter/subwoofer-utgangsport
- S/PDIF ut-port
- Frontpanelydkontakt

POLSKI

- Port wejścia mikrofonu; Conectori aurifoni magistrală PCI
- Port słuchawek/wyjścia na głośnik przodni
- Port wyjścia Surround na głośnik boczny
- Port wyjścia na głośnik centralny/Subwoofer
- Port wyjścia S/PDIF
- Złącze główkowe audio na panelu przednim

PORTUGUÊS

- Porta de entrada de microfone; Porta de entrada de linha
- Porta de saída frontal/auscultadores
- Porta de saída Surround lateral
- Porta de saída central/Subwoofer
- Porta de saída S/PDIF
- Conector de áudio do painel frontal

ROMÂNĂ

- Port de intrare microfon; Port intrare linie
- Port ieşire căşti/frontal
- Port ieşire surround lateral
- Port ieşire central/subwoofer
- Port ieşire S/PDIF
- Distribuitor audio panou frontal

SRPSKI

- Port za ulaz mikrofona; Ulazni liijski port
- Porta za slušalice/izlazni napred
- Izlazni port za zvučno okruženje sa strane
- Izlazni port za centralni/bas zvučnik
- S/PDIF izlazni port
- Distribuitor audio panou frontal

SLOVENŠČINA

- Vhodni priključek za mikrofon; Vhodni priključek za zvok
- Izhodni priključek za slušalke/sprednji zvočnik
- Izhodni priključek za stranski prostorski zvočnik
- Izhodni priključek za osrednji/nizkotonski zvočnik
- Izhodna vrata S/PDIF
- Priključek za zvok na sprednji plošči

ESPAÑOL

- Puerto Entrada de micrófono; Puerto de entrada de línea
- Puerto de salida de auriculares/frontal
- Puerto de salida envolvente lateral
- Puerto de salida central/para amplificador de graves
- Puerto de salida S/PDIF
- Base de conexiones de audio del panel frontal

SVENSKA

- Mikrofon in-port; Ledning in-port
- Hörlurs-/framsidans utport
- Sidutgångsport för surround
- Center-/subwoofertgångsport
- S/PDIF-utgång
- Frampanelens ljudrubrik

TÜRKÇE

- Mikrofon Giriş bağlantı noktası; Hat Giriş bağlantı noktası
- Kulaklık/Ön Çıkış bağlantı noktası
- Yan Çevreleyen Çıkış bağlantı noktası
- Merkez/Derin Bas Çıkış bağlantı noktası
- S/PDIF Çıkış bağlantı noktası
- Ön panel ses bağlantısı

УКРАЇНСЬКА

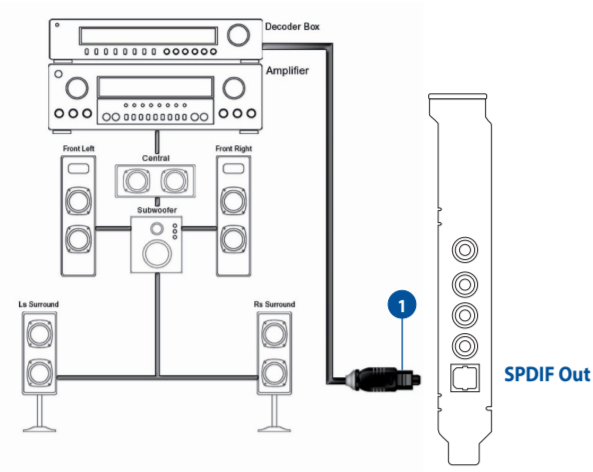
- Порт входу мікрофона; Порт лінійний вхід
- Порт навушники / вихід на передні динаміки
- Порт вихід на бічні динаміки
- Порт вихід на центральний канал / сабвуфер
- Вихідний вихід S/PDIF
- Аудіороз'єм на передній панелі

עברית

- כניסת מיקרופון / Line in
- יציאה קדמית/אוזניות
- יציאת Surround Side
- יציאת סאב וופר/סנטר
- יציאת S/PDIF
- לוח אודיו קדמי

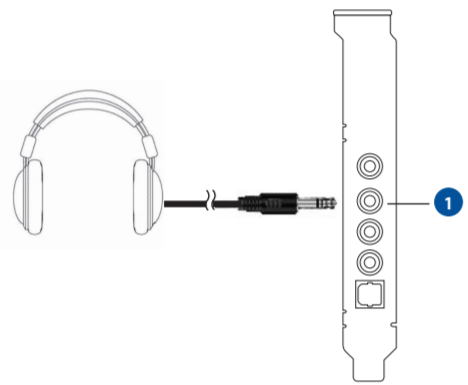
Hardware Features

Connecting digital speaker systems (Home Theater)



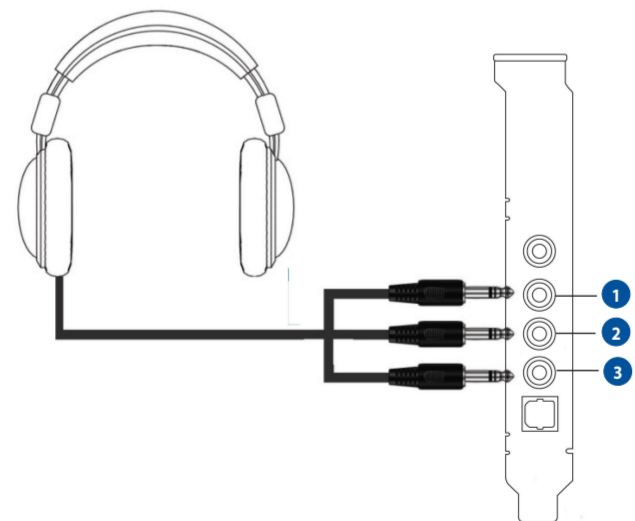
No	Item	Description
1	Optical cable	Plug your decoder's TOSLINK optical cable into the S/PDIF-Out connector.

Connecting stereo headphones



No	Item	Description
1	Front Out/Headphone Jack	The Front Out jack has a built-in high-quality amplifier to drive headphones. Connect your stereo headphones directly to this jack.

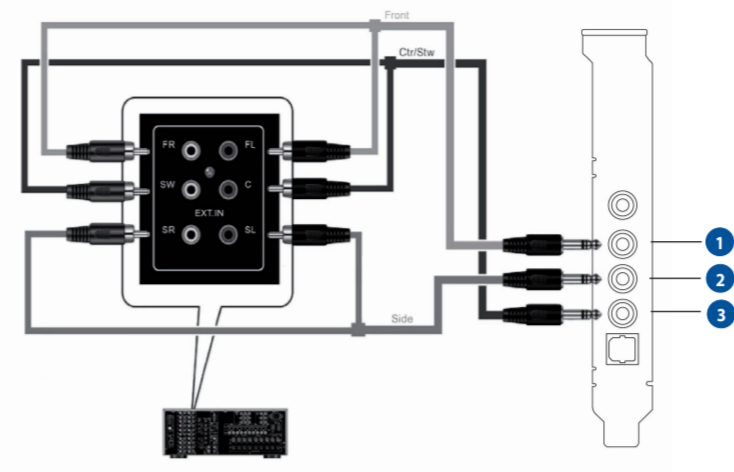
Connecting 5.1 channel headphones



No	Item	Description
1	Front Out port	Connect the front-channel 3.5mm plug of your 5.1 channel headphone into this jack.
2	Side Surround Out port	Connect the surround-channel 3.5mm plug of your 5.1 headphone into this jack.
3	Center/Subwoofer Out port	Connect the Center/Bass-channel 3.5mm plug of your 5.1 headphone into this jack.

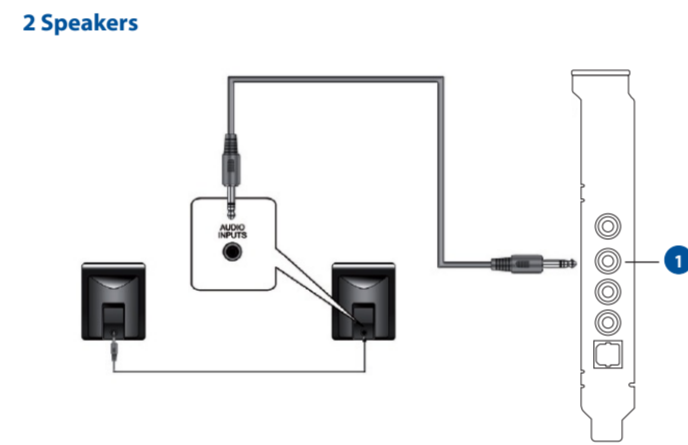
Connectivity Options

Connecting analog power amplifier



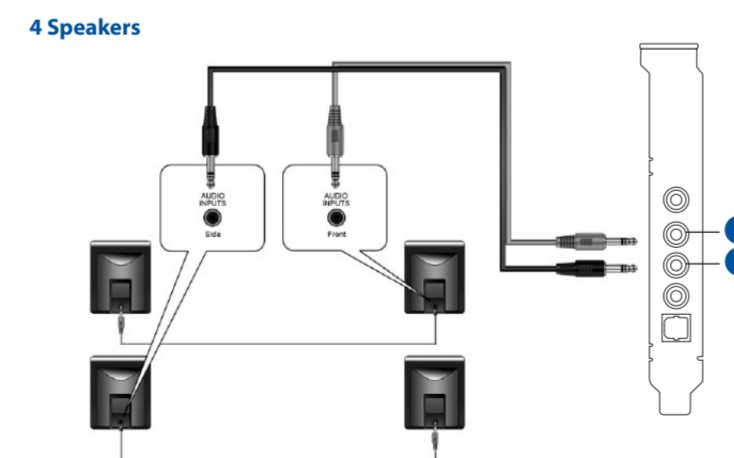
No	Item	Description
1	Front Out port	Connects to the "left front" and "right front" input ports of the analog amplifier with the mini-jack to RCA cable.
2	Side Surround Out port	Connects to the "left surround" and "right surround" input ports of the analog amplifier with the mini-jack to RCA cable.
3	Center/Subwoofer Out port	Connects to the "Center" and "subwoofer" input ports of the analog amplifier with the mini-jack to RCA cable.

Connecting 2 channel speakers



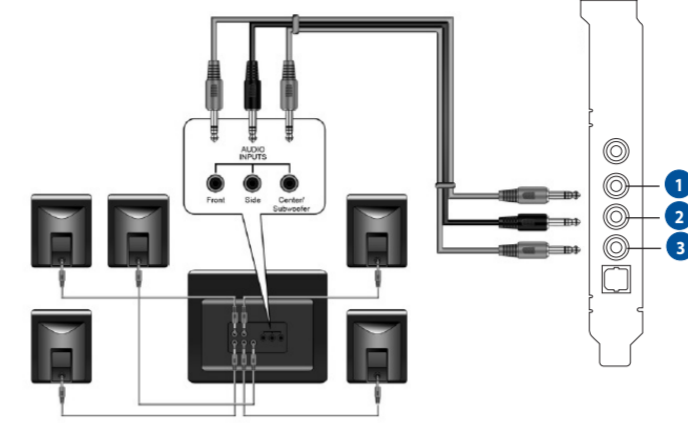
No	Item	Description
1	Front Out/Headphone Jack	Connect the 2 speaker set's 3.5mm plug into this Front Out jack.

Connecting 4 channel speakers



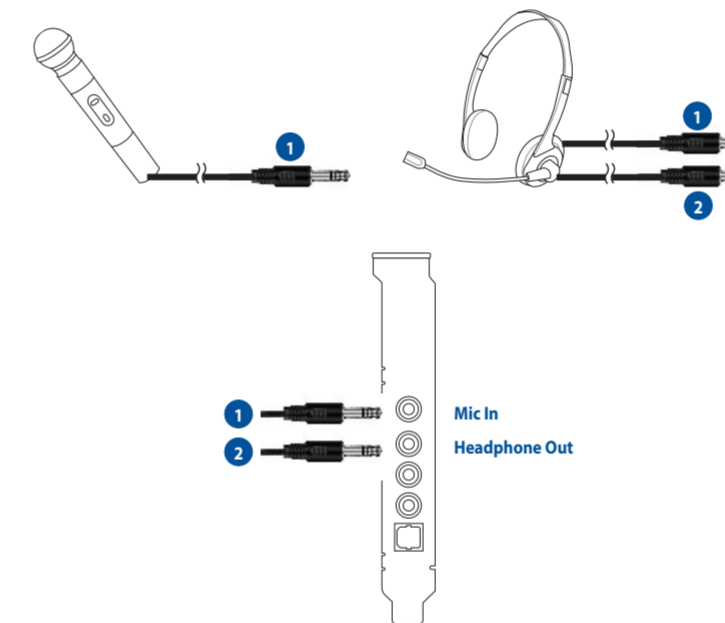
No	Item	Description
1	Front Out port	Connects to the Front input port of the 4 speakers with the mini-jack cable.
2	Side Surround Out port	Connects to the Surround input port of the 4 speakers with the mini-jack cable.

Connecting 5.1 channel speakers



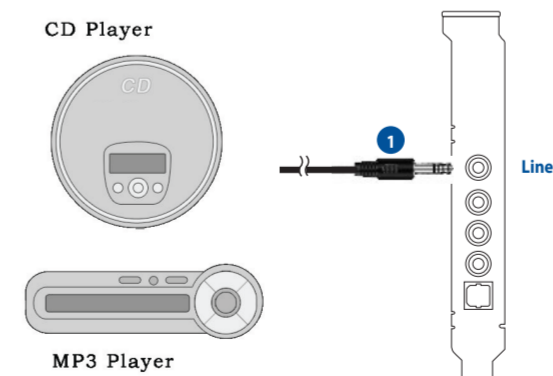
No	Item	Description
1	Front Out port	Connects to the Front input port of the 5.1 speakers with the mini-jack cable.
2	Side Surround Out port	Connects to the Surround input port of the 5.1 speakers with the mini-jack cable.
3	Center/Subwoofer Out port	Connects to the Center/Subwoofer input port of the 5.1 speakers with the mini-jack cable.

Connecting microphone



No	Item	Description
1	Microphone Input Jack	Connect the microphone's 3.5mm plug into this Mic-In jack for voice communication, recording, or karaoke.
2	Headphone Jack	The Front Out jack has a built-in high-quality amplifier to drive headphones. Connect your stereo headphones directly to this jack.

Connecting Line-In audio sources



No	Item	Description
1	Line Input Jack	Connect the 3.5mm plug of the CD/MP3 Player or any other Line level analog audio sources into this Line-In jack for sound recording (See the "Mixer" section of the driver guide).

「產品之限用物質含有情況」之相關資訊，請參考下表：

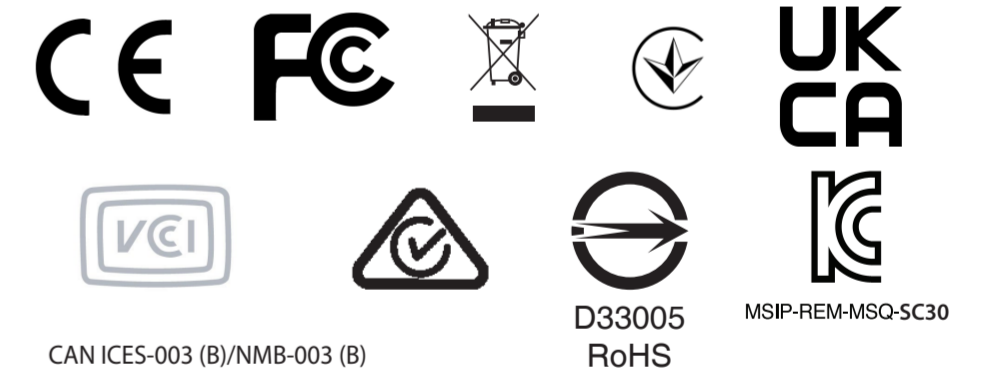
單元	限用物質及其化學符號				
	鉛 (Pb)	汞 (Hg)	鎘 (Cd)	六價鉻 (Cr ^{VI})	多溴聯苯 (PBB) / 多溴二苯醚 (PBDE)
印刷電路板及電子組件	—	○	○	○	○
防護屏蔽罩	○	○	○	○	○
連接線	—	○	○	○	○
其他及其配件	—	○	○	○	○

備考 1. "○" 係指該項限用物質之百分比含量未超出百分比含量基準值。
備考 2. "—" 係指該項限用物質為排除項目。

UKCA statement

Simplified UKCA Declaration of Conformity

ASUSTek Computer Inc. hereby declares that this device is in compliance with the essential requirements and other relevant provisions of related Regulations. Full text of UKCA declaration of conformity is available at <https://www.asus.com/support/>.



CAN ICES-003 (B)/NMB-003 (B)

D33005 RoHS MSIP-REM-MSQ-SC30

AEEE Yönetmeliğine Uygundur



ASUS WARRANTY UPDATE

From 1 January 2012 updated warranties apply to all ASUS products, consistent with the Australian Consumer Law.

For the latest product warranty details please visit: <https://www.asus.com/support>

Our goods come with guarantees that cannot be excluded under the Australian Consumer Law. You are entitled to a replacement or refund for a major failure and compensation for any other reasonably foreseeable loss or damage. You are also entitled to have the goods repaired or replaced if the goods fail to be of acceptable quality and the failure does not amount to a major failure.

If you require assistance please call ASUS Customer Service 1300 2787 88 | <https://www.asus.com/support>

Manufacturer	ASUSTek Computer Inc. Tel: +886-2-2894-3447 Address: 1F, No. 15, Lide Rd., Beitou Dist., Taipei City 112, Taiwan
Authorised representative in United Kingdom	ASUSTEK (UK) LIMITED Tel./FAX No.: +44-01442-202-700 / +44-01442-245-882 Address: 1 st Floor, Sackville House, 143-149 Fenchurch Street, London, EC3M 6BL, England, United Kingdom
Authorised representative in Europe	ASUS Computer GmbH Address: HARKORT STR. 21-23, 40880 RATINGEN, GERMANY